

Quick Installation Guide

AC1200 Wireless
Dual Band USB Adapter

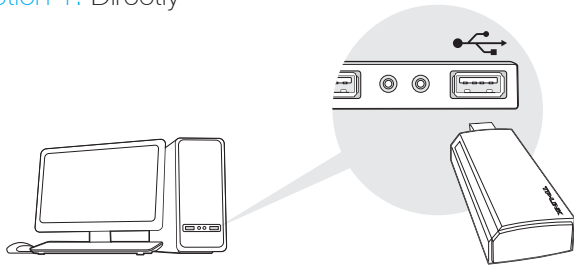
MODEL NO. Archer T4U
7106505060 REV3.0.0



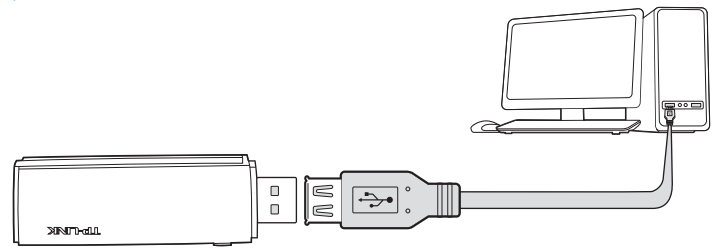
For more information, please visit our website: <http://www.tp-link.com>

1 Connect to a Computer

Option 1: Directly



Option 2: Via the USB Extension Cable

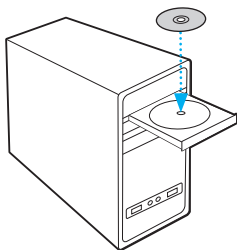


Note: In Windows XP, a Found New Hardware Wizard window will appear when the adapter is detected. Please click Cancel.

2 Install Driver and Utility

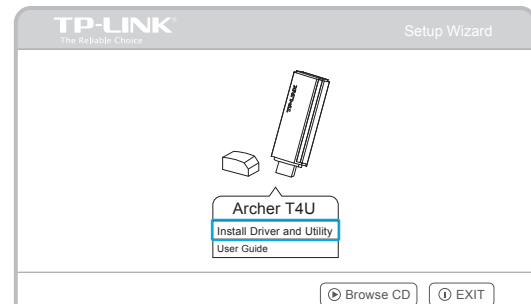
You can also download the driver and utility at www.tp-link.com

A: Insert the CD and run the Autorun.exe from the pop-up Autoplay window.



Note: In some operating systems, the CD screen will pop up automatically. Otherwise, run the CD manually.

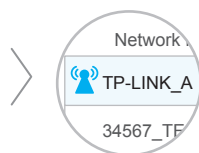
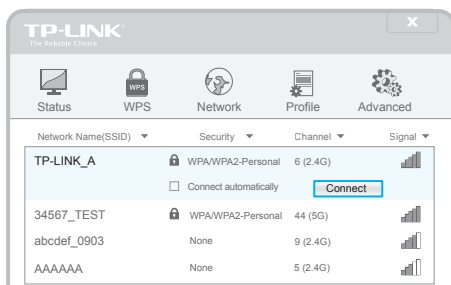
B: Select Archer T4U and click Install Driver and Utility, and then follow the InstallShield Wizard to complete the installation.



3 Join a Wireless Network

Option 1: Via TP-LINK Utility

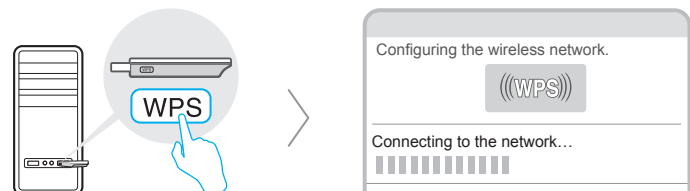
Select your preferred wireless network from the pop-up utility window and click Connect. The symbol  indicates a successful connection.



Option 2: Via Wi-Fi Protected Setup (WPS)

A: Press the WPS button on your router.

B: Within 2 minutes, press and hold the WPS button on the adapter until the following screen appears.



C: When you are prompted "Successfully connected to the network by WPS!", click OK.

Option 3: Via Windows Wireless Utility

With the TP-LINK Utility closed, you can use the Windows built-in Wireless Utility to join a wireless network.