



# EdgePoint™ S16

Intelligent WISP Control  
with FiberProtect™

Model: EP-S16

QUICK START GUIDE



## Introduction

Thank you for purchasing the Ubiquiti Networks® EdgePoint™ Switch. This Quick Start Guide is designed to guide you through installation and includes the warranty terms.

## Package Contents



EdgePoint Switch



Wall-Mount  
Bracket



Metal Straps  
(Qty. 2)



Cable Sleeve



Gigabit PoE (54V, 1.5A) with  
Mounting Bracket



Power Cord



Quick Start  
Guide

## Installation Requirements

- 7 mm socket wrench
- S2 hex wrench
- Ground wire – min. 10 AWG (5 mm<sup>2</sup>) and max. length: 1 m. As a safety precaution, ground the EdgePoint to a grounded mast, pole, tower, or grounding bar.
- Shielded Category 5 (or above) cabling should be used for all wired Ethernet connections and should be grounded through the AC ground of the PoE.
- We recommend that you protect your networks from harmful outdoor environments and destructive ESD events with industrial-grade, shielded Ethernet cable from Ubiquiti Networks. For more details, visit: [www.ubnt.com/toughcable](http://www.ubnt.com/toughcable)

TERMS OF USE: Shielded Ethernet cable and earth grounding must be used as conditions of product warranty. TOUGH Cable™ is designed for outdoor installations. It is the customer's responsibility to follow local country regulations, including operation within legal frequency channels, output power, and Dynamic Frequency Selection (DFS) requirements.

## Hardware Overview

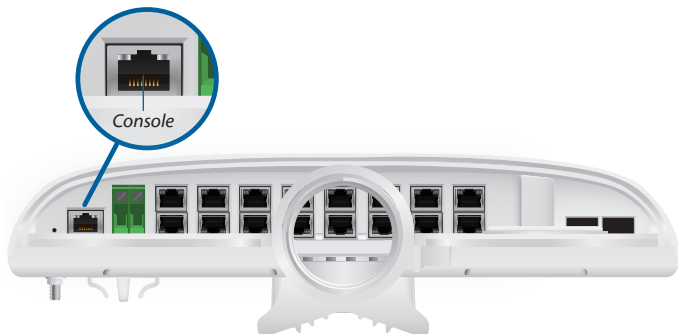
### Bottom Panel Button



Button	Description
Reset	<p>There are two methods to reset the EP-S16 to factory defaults:</p> <p><b>Runtime Reset (Recommended)</b></p> <p>The EP-S16 should be running after bootup is complete, and the power LED is white. Press and hold the <b>Reset</b> button. The EP-S16 will reboot, and the power LED becomes blue after three seconds. Continue to hold the <b>Reset</b> button for about 15 seconds until the power LED flashes blue for two seconds. This indicates that the EP-S16 has reset to its factory defaults.</p> <p><b>Power-on Reset</b></p> <ol style="list-style-type: none"> <li>1. Disconnect power from the EP-S16.</li> <li>2. While connecting power to the EP-S16, hold the <b>Reset</b> button for about 15 seconds until the power LED flashes blue for two seconds. This indicates that the EP-S16 has reset to its factory defaults.</li> </ol>



## Bottom Panel Console Port



Interface	Description
Console	<p>RJ45 serial console port for Command Line Interface (CLI) management. Use an RJ45-to-DB9, serial console cable, also known as a rollover cable, to connect the <i>Console</i> port to your computer. (If your computer does not have a DB9 port, then you will also need a DB9 adapter.) Then configure the following settings as needed:</p> <ul style="list-style-type: none"> <li>• <i>Baud rate</i> 115200</li> <li>• <i>Data bits</i> 8</li> <li>• <i>Parity</i> NONE</li> <li>• <i>Stop bits</i> 1</li> <li>• <i>Flow control</i> NONE</li> </ul>



**Note:** Remove the protective plug from the *Console* port before use.

## Power Options

Either the VDC or PoE input type is used at any one time. If both are connected, only the input type with the highest voltage will be used; the other can be used as a backup.

Both PoE inputs can be used at the same time. If there is a voltage difference, the higher-voltage source will be used first. The voltage from the initial source will drop as the load increases. When the voltage drops to the same level as the lower-voltage source, then the lower-voltage source will also start providing power.

### Power Input Options

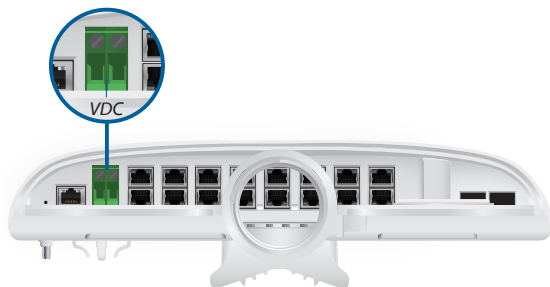
- 54VDC, 6A
- 54V, 1.5A on *PoE In/1*
- 54V, 1.5A on *PoE In/2*

### Power Output Options

- EdgePoint (required)
- Passive 54/24V, 4-Pair PoE on 1-4
- PoE+ or Passive 24V, 2-Pair PoE on 5-16

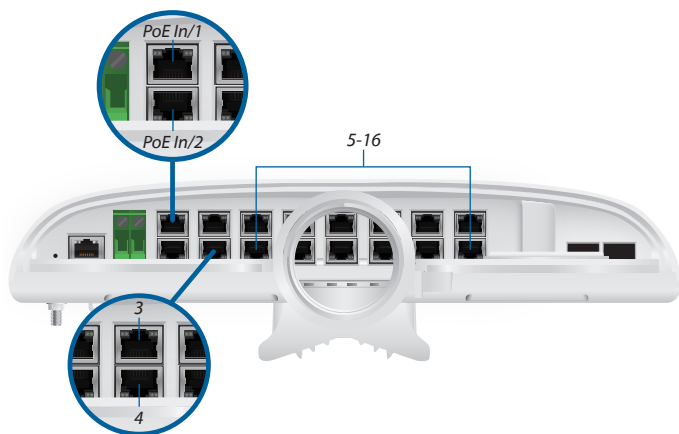
The number of devices that can be powered depends on the power consumption of the specific devices. Example: If you use 54VDC, 1.5A, then you have 81W. If the EdgePoint uses 40W, then you have 41W for PoE output. Check product specifications for the power consumption values to use in your calculations.

## Bottom Panel DC Input



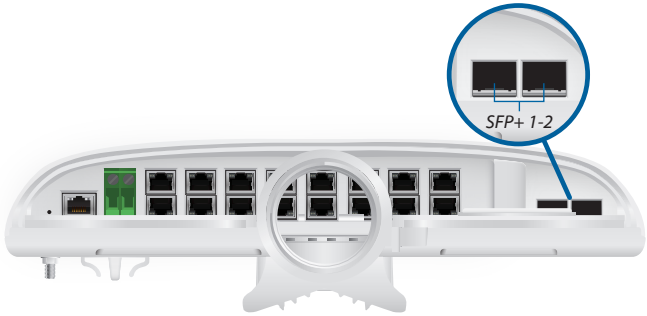
Interface	Description
VDC In	Terminal block connector uses auto-polarity detection and accepts +42 to +56VDC, 6A input (including the Ubiquiti Networks EdgePower™, model EP-54V-150W) to power the EdgePoint and passive PoE output.

## Bottom Panel RJ45 Ports




Interface	Description
PoE In / 1-2 (54/24V PoE Out)	<p>RJ45 ports support 10/100/1000 Ethernet connections and have PoE input or output functionality:</p> <ul style="list-style-type: none"> <li>• <b>PoE Input</b> Accepts 54V, 1.5A PoE input to power the EdgePoint and PoE output.</li> <li>• <b>PoE Output</b> You can configure the ports for 54/24V 4-pair PoE output.</li> </ul> <p>Do NOT configure port <i>PoE In / 1</i> or <i>2</i> in PoE output mode if you are using it as a PoE input power source.</p>
3-4 (54/24V PoE Out)	<p>RJ45 ports support 10/100/1000 Ethernet connections and passive 54/24V, 4-pair PoE output for airFiber® devices.</p>
5-16 (PoE+ or 24V PoE Out)	<p>RJ45 ports support 10/100/1000 Ethernet connections and PoE+ (IEEE 802.3af/802.3at) or passive 24V, 2-pair PoE output for airMAX® or other devices.</p>

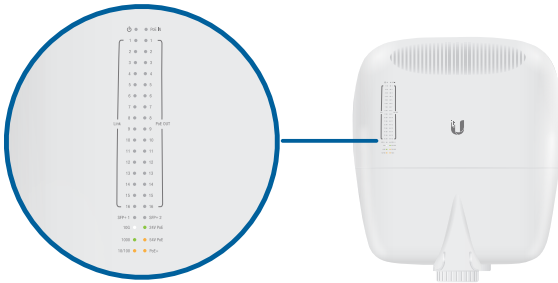
## Bottom Panel SFP Ports



Interface	Description
SFP+ 1-2	SFP+ ports are hot-swappable and support 1/10 Gbps fiber SFP/SFP+ modules.

 **Note:** For extreme temperatures, please use industrial-grade fiber SFP/SFP+ modules.

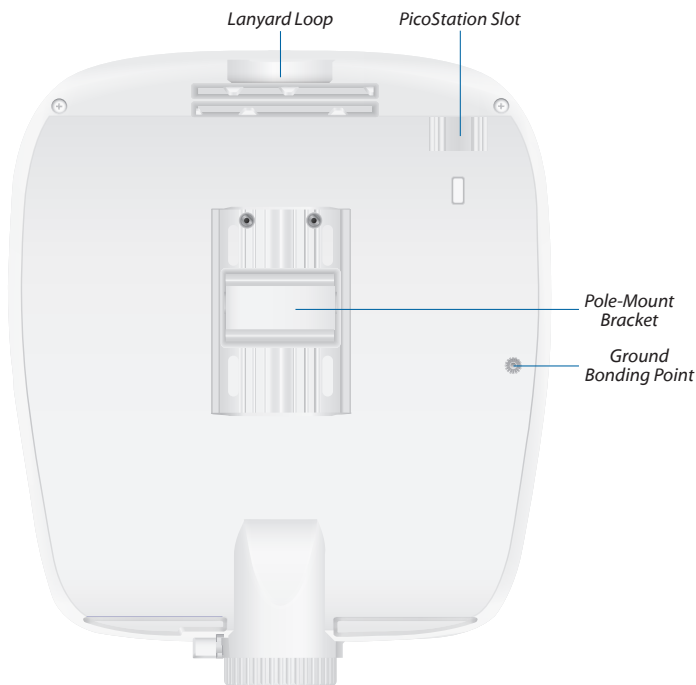
## Front Panel LEDs



LED	State	Status
power	White	Ready for Use
	Blue	Bootup in Progress Flashing Indicates Reset to Factory Defaults

LED		State	Status
PoE Input		Off	No PoE
		Green	54V Passive
1-4	Speed/ Link/Act	Off	No Link
		Amber	10/100 Mbps Link Flashing Indicates Activity
		Green	1000 Mbps (1 Gbps) Link Flashing Indicates Activity
	PoE Output	Off	No PoE
		Amber	54V Passive, 4-Pair
		Green	24V Passive, 4-Pair
5-16	Speed/ Link/Act	Off	No Link
		Amber	10/100 Mbps Link Flashing Indicates Activity
		Green	1000 Mbps (1 Gbps) Link Flashing Indicates Activity
	PoE Output	Off	No PoE
		Amber	PoE+ Auto (IEEE 802.3af/802.3at)
		Green	24V Passive, 2-Pair
SFP+ 1-2	Speed/ Link/Act	Off	No Link
		Green	1000 Mbps (1 Gbps) Link Flashing Indicates Activity
		White	10 Gbps Link Flashing Indicates Activity

## Back Panel



**Lanyard Loop** Used for temporary support during installation.

**PicoStation®M2HP Slot** Used for mounting an optional PicoStationM2HP (not included) to the back of the EdgePoint. (You can use the PicoStationM2HP for wireless management of the EdgePoint.)

**Pole-Mount Bracket** Used for pole-mounting or in combination with the included *Wall-Mount Bracket* for wall-mounting.

**Ground Bonding Point** Used to secure a ground wire (not included).

## Attaching the Cable Sleeve

1. Insert and rotate the coupling to attach the *Cable Sleeve* to the EdgePoint.



**Note:** You have two options for using a 2.0-inch NPT (National Pipe Thread) male conduit (not included):

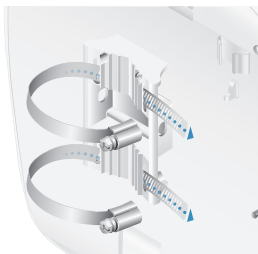
- Use the conduit instead of the *Cable Sleeve*.
- Use the conduit to extend the *Cable Sleeve*.

## Hardware Installation

You can mount the EdgePoint on a pole or to a wall. Follow the appropriate instructions for your installation method.

### Pole-Mounting

1. Open the two *Metal Straps* and feed them through the mounting slots on the back of the EdgePoint.



2. Wrap the *Metal Straps* around the pole. Use a 7 mm socket wrench to turn the screws clockwise and securely fasten the straps to the pole.



3. Proceed to the *Grounding the EdgePoint* section.

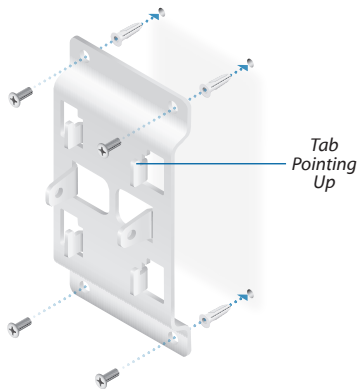


## Wall-Mounting

1. Use M8 screws and anchors (not included) to attach the *Wall-Mount Bracket* to the wall.



**Note:** The *Wall-Mount Bracket* must attach directly to a stud or other structurally stable surface.



2. Insert the tabs of the *Wall-Mount Bracket* into the slots of the *EdgePoint*. Slide the *EdgePoint* down.



3. Use two M8x10 screws (not included) to attach the EdgePoint to the *Wall-Mount Bracket*.



## Grounding the EdgePoint



**Note:** The ground wire should be as short as possible and no longer than one meter in length.

1. Remove the nut from the *Ground Bonding Point* located on the back of the EdgePoint.



2. Attach a ground wire (min. 10 AWG or 5 mm<sup>2</sup>) to the lug and replace the nut to secure the wire.



3. Secure the other end of the ground wire to a grounded mast, pole, tower, or grounding bar.

## Connecting Ethernet

1. Use an S2 hex wrench to loosen the *Screw* and remove the port cover from the EdgePoint.



2. Feed the Ethernet cables through the *Cable Sleeve* and connect them to ports in this range: 1-16.



**Note:** PoE is disabled by default.



3. You can create a strain relief for any Ethernet cable by feeding a cable tie (not included) through the tie slot under the cable. Then wrap the cable tie around the cable and tighten.



4. Connect the other ends of the Ethernet cables to your network devices.

## Using SFP Ports

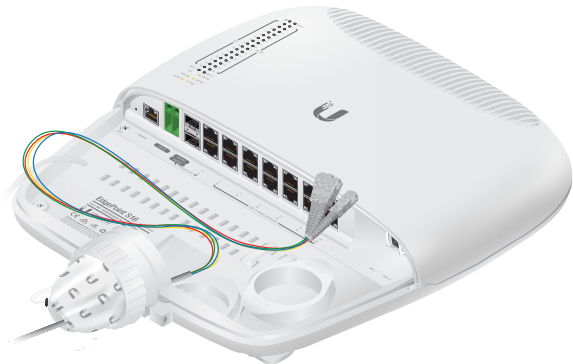
For information about compatible fiber SFP/SFP+ modules, visit: [community.ubnt.com/edgemax](http://community.ubnt.com/edgemax)

To use an *SFP+* port:

1. Plug a compatible fiber module into the *SFP+* port.



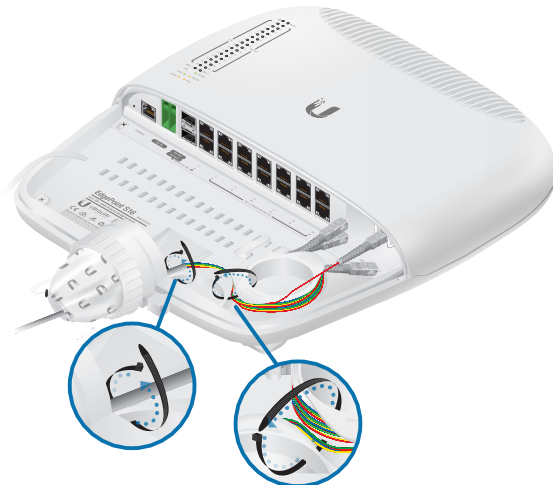
2. Feed the fiber optic cable through the *Cable Sleeve*, and remove the cable jacket from the fiber optic cable.



3. Separate the fiber optic strands and spool them around the strain relief reels in the direction of the arrows. Then connect a fiber optic strand to the fiber module.



4. To finish the strain relief:
  - a. Feed a cable tie (not included) through the tie slot near the cable opening.
  - b. Feed an additional cable tie (not included) through the tie slots at the bottom of the strain relief reels.



## Connecting to Power

Either the +42 to +56VDC input or PoE input is used at any one time. If both input types are connected, only the input type with the highest voltage will be used; the other can be used as a backup. Follow the appropriate instructions for your installation:

### Connecting to the 54VDC Input

1. Wire one end of the DC power cable to the VDC terminal block, which uses auto-polarity detection.



2. Replace the port cover and use an S2 hex wrench to tighten the Screw and secure the port cover.



3. Wire the other end of the cable to a DC power supply.
4. Connect the DC power supply to its power source.



## Connecting Power Using PoE

The following instructions show port *PoE In / 1*; however, you can use port *PoE In / 2* instead.

Both PoE inputs can be used at the same time. If there is a voltage difference, the higher-voltage source will be used first. The voltage from the initial source will drop as the load increases. When the voltage drops to the same level as the lower-voltage source, then the lower-voltage source will also start providing power.

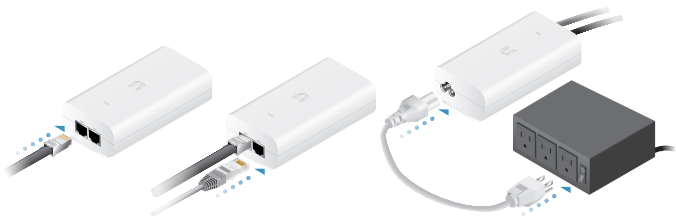


**Note:** Do NOT configure port *PoE In / 1* or *2* in PoE output mode if you are using it as a PoE input power source.

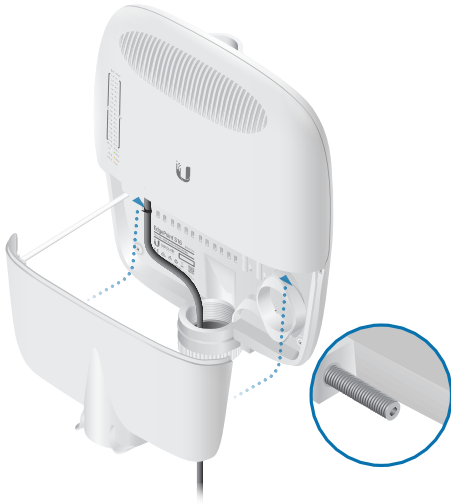
1. Connect an Ethernet cable to port *PoE In / 1* of the EdgePoint.



2. Connect the other end of the Ethernet cable to the **POE** port on the *Gigabit PoE* adapter.
3. Connect an Ethernet cable from the LAN to the **LAN** port on the *Gigabit PoE* adapter.
4. Connect the *Power Cord* to the *Gigabit PoE* adapter. Then plug the *Power Cord* into a power outlet.

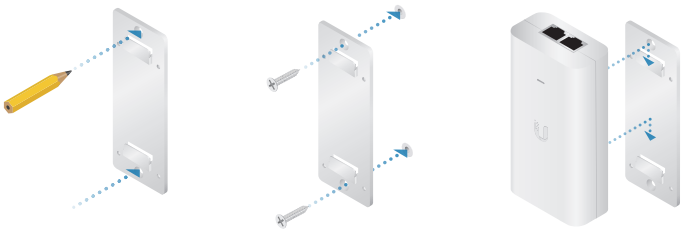


- When you are finished, replace the port cover and use an S2 hex wrench to tighten the Screw and secure the port cover.



## Mounting the PoE Adapter (Optional)

- Remove the *PoE Mounting Bracket* from the adapter, place the bracket at the desired location, and mark the two holes.
- Pre-drill the holes if necessary, and secure the bracket using two fasteners (not included).
- Align the slots on the adapter with the tabs on the *PoE Mounting Bracket*, and then slide the adapter down.



## Accessing the Configuration Interface

The EP-S16 is set to *DHCP* by default, so it will try to automatically obtain an IP address. If that fails, then it will use the default fallback IP address, *192.168.1.2*. Proceed to the appropriate section, *DHCP* or *Fallback IP Address*:

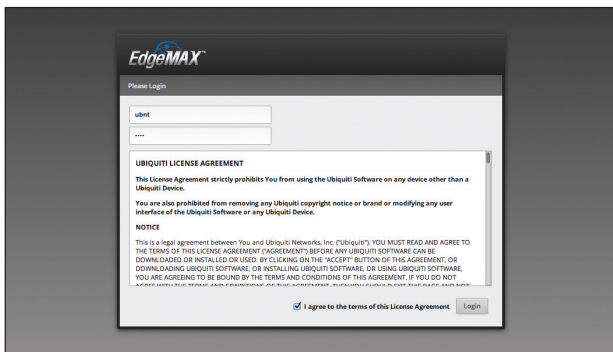
### DHCP

Use one of the following methods:

- Set up the DHCP server to provide a specific IP address to the EP-S16 based on its MAC address (on the label).
- Let the EP-S16 obtain an IP address and then check the DHCP server to see which IP address was assigned.

To log in, follow these steps:

1. Launch your web browser. Type the appropriate IP address in the address field. Press **enter** (PC) or **return** (Mac).
2. The login screen will appear. Enter **ubnt** in the *Username* and *Password* fields. Read the Ubiquiti License Agreement, and check the box next to *I agree to the terms of this License Agreement* to accept it. Click **Login**.



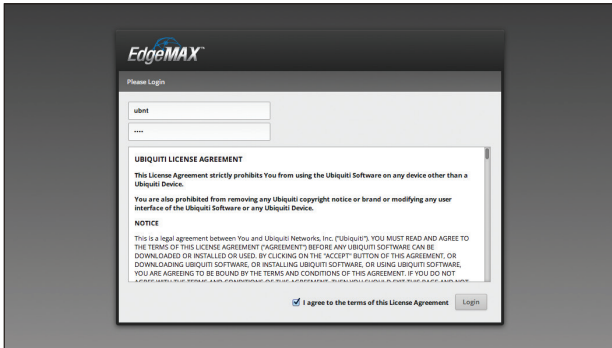
The EP-S16 Configuration Interface will appear. Customize additional settings as needed. For more information on PoE configuration, refer to the *Configuring PoE Settings* section.

## Fallback IP Address

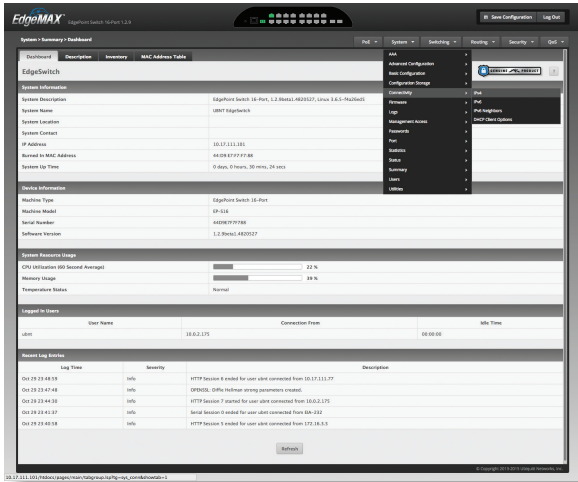
1. Ensure that your computer (or other host machine) is connected to the EP-S16.
2. Configure the Ethernet adapter on your host system with a static IP address on the 192.168.1.x subnet.
3. Launch your web browser. Type the appropriate IP address in the address field (*192.168.1.2* is the default fallback IP address). Press **enter** (PC) or **return** (Mac).



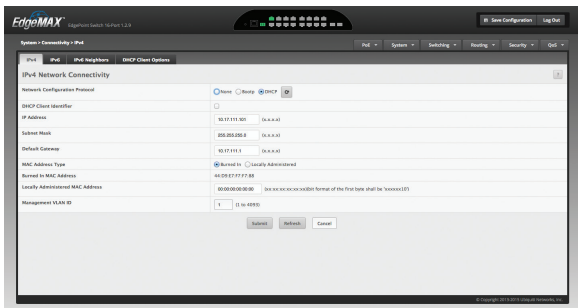
4. The login screen will appear. Enter **ubnt** in the *Username* and *Password* fields. Read the Ubiquiti License Agreement, and check the box next to *I agree to the terms of this License Agreement* to accept it. Click **Login**.



- The EP-S16 Configuration Interface will appear. Go to **System > Connectivity > IPv4**.



- Change the **IP Address** to a unique IP address or select **DHCP** on the **IPv4** tab. Click **Submit**.



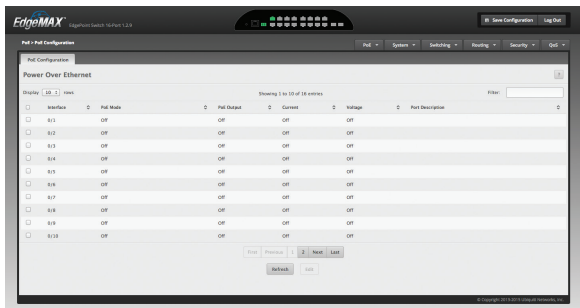
**Note:** If you change the IP settings, then the session will be cut off, and you will need to reconnect to the EP-S16 using the new IP address.

Customize additional settings as needed. For more information on PoE configuration, refer to the *Configuring PoE Settings* section.

## Configuring PoE Settings

**!** **WARNING:** Before activating 54V or 24V passive PoE, ensure that the connected device supports PoE and the supplied voltage.

1. Go to **PoE > PoE Configuration**.
2. Select the Ethernet port you want to configure. Then click **Edit**.



3. Configure the *PoE Mode* setting:

- For ports 1-4, select **Off**, **54V passive 4-pair**, or **24V passive 4-pair**.
- For ports 5-16, select **Off**, **PoE+ auto**, or **24V passive**.

**!** **WARNING:** Do NOT connect 4-pair PoE devices, such as airFiber devices, to ports 5-16. They support 2-pair PoE only.

Then click **Submit**.



**Note:** If the *PoE* screen states that PoE is not supported, then there is insufficient power. You will need to increase the power input to the EdgePoint.

For more information, refer to the EdgeSwitch™ documentation, which is available at [documentation.ubnt.com/edgemax](http://documentation.ubnt.com/edgemax)

# Specifications

EP-S16	
Dimensions With Wall-Mount	326.6 x 382.7 x 88.8 mm (12.86 x 15.07 x 3.50") 326.6 x 382.7 x 105.5 mm (12.86 x 15.07 x 4.15")
Weight With Wall-Mount	3.4 kg (7.50 lb) 3.8 kg (8.38 lb)
Max. Power Consumption	40W (Excludes PoE Output)
Power Input	(1) DC Terminal Block or (2) RJ45 (Ports 1 and 2) (Self-Correcting Polarity Protection on DC Terminal Block Only, Diode ORed Protection on All Power Inputs)
Power Supply	Min. 54V / 0.8A (Excludes PoE Output Power)
VDC Input	54V / 6A
Passive PoE Input	(2) 54V / 1.5A, 4-Pair (+1, 2, 4, 5; - 3, 6, 7, 8) Passive PoE, Ports 1 and 2 (Do NOT Configure Port 1 or 2 in PoE Output Mode if You Are Using PoE Input Power Sources.)
Passive PoE Output	(4) 54V or 24V /1.4A, 4-Pair (+1, 2, 4, 5; - 3, 6, 7, 8) Passive PoE, Ports 1 to 4 (12) 802.3af/at or 24V/0.7A, 2-Pair (+ 4, 5; - 7, 8) Passive PoE, Ports 5 to 16
Power Monitoring	(1) DC Terminal Block, Input Power (2) RJ45, Ports 1 and 2, PoE Input or Output Power (14) RJ45, Ports 3 to 16, PoE Output Power
Supported Voltage Range	+42 to +56VDC
Button	Reset
LEDs System PoE In 1 to 16 SFP	Power PoE Speed/Link/Activity, PoE Speed/Link/Activity
Ports Serial Console Port Data Ports	(1) RJ45 Serial Port (16) 10/100/1000 RJ45 Ports (2) 1/10 Gbps SFP+ Ports
Certifications	CE, FCC, IC
Pole/Wall Mount	Yes
Operating Temperature	-40 to 65° C (-40 to 149° F)
Operating Humidity	10 - 90% Noncondensing

## Safety Notices

1. Read, follow, and keep these instructions.
2. Heed all warnings.
3. Only use attachments/accessories specified by the manufacturer.



**WARNING:** Do not use this product in location that can be submerged by water.



**WARNING:** Avoid using this product during an electrical storm. There may be a remote risk of electric shock from lightning.

## Electrical Safety Information

1. Compliance is required with respect to voltage, frequency, and current requirements indicated on the manufacturer's label. Connection to a different power source than those specified may result in improper operation, damage to the equipment or pose a fire hazard if the limitations are not followed.
2. There are no operator serviceable parts inside this equipment. Service should be provided only by a qualified service technician.
3. This equipment is provided with a detachable power cord which has an integral safety ground wire intended for connection to a grounded safety outlet.
  - a. Do not substitute the power cord with one that is not the provided approved type. Never use an adapter plug to connect to a 2-wire outlet as this will defeat the continuity of the grounding wire.
  - b. The equipment requires the use of the ground wire as a part of the safety certification, modification or misuse can provide a shock hazard that can result in serious injury or death.
  - c. Contact a qualified electrician or the manufacturer if there are questions about the installation prior to connecting the equipment.
  - d. Protective earthing is provided by Listed AC adapter. Building installation shall provide appropriate short-circuit backup protection.
  - e. Protective bonding must be installed in accordance with local national wiring rules and regulations.



## Limited Warranty

UBIQUITI NETWORKS, Inc (“UBIQUITI NETWORKS”) warrants that the product(s) furnished hereunder (the “Product(s)”) shall be free from defects in material and workmanship for a period of one (1) year from the date of shipment by UBIQUITI NETWORKS under normal use and operation. UBIQUITI NETWORKS’ sole and exclusive obligation and liability under the foregoing warranty shall be for UBIQUITI NETWORKS, at its discretion, to repair or replace any Product that fails to conform to the above warranty during the above warranty period. The expense of removal and reinstallation of any Product is not included in this warranty. The warranty period of any repaired or replaced Product shall not extend beyond its original term.

## Warranty Conditions

The above warranty does not apply if the Product:

- (I) has been modified and/or altered, or an addition made thereto, except by Ubiquiti Networks, or Ubiquiti Networks’ authorized representatives, or as approved by Ubiquiti Networks in writing;
- (II) has been painted, rebranded or physically modified in any way;
- (III) has been damaged due to errors or defects in cabling;
- (IV) has been subjected to misuse, abuse, negligence, abnormal physical, electromagnetic or electrical stress, including lightning strikes, or accident;
- (V) has been damaged or impaired as a result of using third party firmware;
- (VI) has no original Ubiquiti MAC label, or is missing any other original Ubiquiti label(s); or
- (VII) has not been received by Ubiquiti within 30 days of issuance of the RMA.

In addition, the above warranty shall apply only if: the product has been properly installed and used at all times in accordance, and in all material respects, with the applicable Product documentation; all Ethernet cabling runs use CAT5 (or above), and for outdoor installations, shielded Ethernet cabling is used, and for indoor installations, indoor cabling requirements are followed.

## Returns

No Products will be accepted for replacement or repair without obtaining a Return Materials Authorization (RMA) number from UBIQUITI NETWORKS during the warranty period, and the Products being received at UBIQUITI NETWORKS’ facility freight prepaid in accordance with the RMA process of UBIQUITI NETWORKS. Products returned without an RMA number will not be processed and will be returned freight collect or subject to disposal. Information on the RMA process and obtaining an RMA number can be found at: [www.ubnt.com/support/warranty](http://www.ubnt.com/support/warranty).

## Disclaimer

EXCEPT FOR ANY EXPRESS WARRANTIES PROVIDED HEREIN, UBIQUITI NETWORKS, ITS AFFILIATES, AND ITS AND THEIR THIRD PARTY DATA, SERVICE, SOFTWARE AND HARDWARE PROVIDERS HEREBY DISCLAIM AND MAKE NO OTHER REPRESENTATION OR WARRANTY OF ANY KIND, EXPRESS, IMPLIED OR STATUTORY, INCLUDING, BUT NOT LIMITED TO, REPRESENTATIONS, GUARANTEES, OR WARRANTIES OF MERCHANTABILITY, ACCURACY, QUALITY OF SERVICE OR RESULTS, AVAILABILITY, SATISFACTORY QUALITY, LACK OF VIRUSES, QUIET ENJOYMENT, FITNESS FOR A PARTICULAR PURPOSE AND NON-INFRINGEMENT AND ANY WARRANTIES ARISING FROM ANY COURSE OF DEALING, USAGE OR TRADE PRACTICE IN CONNECTION WITH SUCH PRODUCTS AND SERVICES. BUYER ACKNOWLEDGES THAT NEITHER UBIQUITI NETWORKS NOR ITS THIRD PARTY PROVIDERS CONTROL BUYER'S EQUIPMENT OR THE TRANSFER OF DATA OVER COMMUNICATIONS FACILITIES, INCLUDING THE INTERNET, AND THAT THE PRODUCTS AND SERVICES MAY BE SUBJECT TO LIMITATIONS, INTERRUPTIONS, DELAYS, CANCELLATIONS AND OTHER PROBLEMS INHERENT IN THE USE OF COMMUNICATIONS FACILITIES. UBIQUITI NETWORKS, ITS AFFILIATES AND ITS AND THEIR THIRD PARTY PROVIDERS ARE NOT RESPONSIBLE FOR ANY INTERRUPTIONS, DELAYS, CANCELLATIONS, DELIVERY FAILURES, DATA LOSS, CONTENT CORRUPTION, PACKET LOSS, OR OTHER DAMAGE RESULTING FROM ANY OF THE FOREGOING. In addition, UBIQUITI NETWORKS does not warrant that the operation of the Products will be error-free or that operation will be uninterrupted. In no event shall UBIQUITI NETWORKS be responsible for damages or claims of any nature or description relating to system performance, including coverage, buyer's selection of products (including the Products) for buyer's application and/or failure of products (including the Products) to meet government or regulatory requirements.

## Limitation of Liability

EXCEPT TO THE EXTENT PROHIBITED BY LOCAL LAW, IN NO EVENT WILL UBIQUITI OR ITS SUBSIDIARIES, AFFILIATES OR SUPPLIERS BE LIABLE FOR DIRECT, SPECIAL, INCIDENTAL, CONSEQUENTIAL OR OTHER DAMAGES (INCLUDING LOST PROFIT, LOST DATA, OR DOWNTIME COSTS), ARISING OUT OF THE USE, INABILITY TO USE, OR THE RESULTS OF USE OF THE PRODUCT, WHETHER BASED IN WARRANTY, CONTRACT, TORT OR OTHER LEGAL THEORY, AND WHETHER OR NOT ADVISED OF THE POSSIBILITY OF SUCH DAMAGES.

## Note

Some countries, states and provinces do not allow exclusions of implied warranties or conditions, so the above exclusion may not apply to you. You may have other rights that vary from country to country, state to state, or province to province. Some countries, states and provinces do not allow the exclusion or limitation of liability for incidental or consequential damages, so the above limitation may not apply to you. EXCEPT TO THE EXTENT ALLOWED BY LOCAL LAW, THESE WARRANTY TERMS DO NOT EXCLUDE, RESTRICT OR MODIFY, AND ARE IN ADDITION TO, THE MANDATORY STATUTORY RIGHTS APPLICABLE TO THE LICENSE OF ANY SOFTWARE (EMBEDDED IN THE PRODUCT) TO YOU. The United Nations Convention on Contracts for the International Sale of Goods shall not apply to any transactions regarding the sale of the Products.

## Compliance

### FCC

Changes or modifications not expressly approved by the party responsible for compliance could void the user's authority to operate the equipment.

This device complies with Part 15 of the FCC Rules. Operation is subject to the following two conditions:

1. This device may not cause harmful interference, and
2. This device must accept any interference received, including interference that may cause undesired operation.

NOTE: This equipment has been tested and found to comply with the limits for a Class A digital device, pursuant to part 15 of the FCC Rules. These limits are designed to provide reasonable protection against harmful interference when the equipment is operated in a commercial environment. This equipment generates, uses, and can radiate radio frequency energy and, if not installed and used in accordance with the instruction manual, may cause harmful interference to radio communications. Operations of this equipment in a residential area is likely to cause harmful interference in which case the user will be required to correct the interference at his own expense.

### Industry Canada

#### CAN ICES-3(A)/NMB-3(A)

This Class A digital apparatus complies with Canadian CAN ICES-003.

#### CAN ICES-3(A)/NMB-3(A)

Cet appareil numérique de la classe A est conforme à la norme NMB-003 du Canada.

### Australia and New Zealand



Warning: This is a Class A product. In a domestic environment this product may cause radio interference in which case the user may be required to take adequate measures.

### CE Marking

CE marking on this product represents the product is in compliance with all directives that are applicable to it.



## RoHS/WEEE Compliance Statement



### English

European Directive 2002/96/EC requires that the equipment bearing this symbol on the product and/or its packaging must not be disposed of with unsorted municipal waste. The symbol indicates that this product should be disposed of separately from regular household waste streams. It is your responsibility to dispose of this and other electric and electronic equipment via designated collection facilities appointed by the government or local authorities. Correct disposal and recycling will help prevent potential negative consequences to the environment and human health. For more detailed information about the disposal of your old equipment, please contact your local authorities, waste disposal service, or the shop where you purchased the product.

### Deutsch

Die Europäische Richtlinie 2002/96/EC verlangt, dass technische Ausrüstung, die direkt am Gerät und/oder an der Verpackung mit diesem Symbol versehen ist, nicht zusammen mit unsortiertem Gemeindeabfall entsorgt werden darf. Das Symbol weist darauf hin, dass das Produkt von regulärem Haushaltsmüll getrennt entsorgt werden sollte. Es liegt in Ihrer Verantwortung, dieses Gerät und andere elektrische und elektronische Geräte über die dafür zuständigen und von der Regierung oder örtlichen Behörden dazu bestimmten Sammelstellen zu entsorgen. Ordnungsgemäßes Entsorgen und Recyceln trägt dazu bei, potentielle negative Folgen für Umwelt und die menschliche Gesundheit zu vermeiden. Wenn Sie weitere Informationen zur Entsorgung Ihrer Altgeräte benötigen, wenden Sie sich bitte an die örtlichen Behörden oder städtischen Entsorgungsdienste oder an den Händler, bei dem Sie das Produkt erworben haben.

### Español

La Directiva 2002/96/CE de la UE exige que los equipos que lleven este símbolo en el propio aparato y/o en su embalaje no deben eliminarse junto con otros residuos urbanos no seleccionados. El símbolo indica que el producto en cuestión debe separarse de los residuos domésticos convencionales con vistas a su eliminación. Es responsabilidad suya desechar este y cualesquiera otros aparatos eléctricos y electrónicos a través de los puntos de recogida que ponen a su disposición el gobierno y las autoridades locales. Al desechar y reciclar correctamente estos aparatos estará contribuyendo a evitar posibles consecuencias negativas para el medio ambiente y la salud de las personas. Si desea obtener información más detallada sobre la eliminación segura de su aparato usado, consulte a las autoridades locales, al servicio de recogida y eliminación de residuos de su zona o pregunte en la tienda donde adquirió el producto.

## Français

La directive européenne 2002/96/CE exige que l'équipement sur lequel est apposé ce symbole sur le produit et/ou son emballage ne soit pas jeté avec les autres ordures ménagères. Ce symbole indique que le produit doit être éliminé dans un circuit distinct de celui pour les déchets des ménages. Il est de votre responsabilité de jeter ce matériel ainsi que tout autre matériel électrique ou électronique par les moyens de collecte indiqués par le gouvernement et les pouvoirs publics des collectivités territoriales. L'élimination et le recyclage en bonne et due forme ont pour but de lutter contre l'impact néfaste potentiel de ce type de produits sur l'environnement et la santé publique. Pour plus d'informations sur le mode d'élimination de votre ancien équipement, veuillez prendre contact avec les pouvoirs publics locaux, le service de traitement des déchets, ou l'endroit où vous avez acheté le produit.

## Italiano

La direttiva europea 2002/96/EC richiede che le apparecchiature contrassegnate con questo simbolo sul prodotto e/o sull'imballaggio non siano smaltite insieme ai rifiuti urbani non differenziati. Il simbolo indica che questo prodotto non deve essere smaltito insieme ai normali rifiuti domestici. È responsabilità del proprietario smaltire sia questi prodotti sia le altre apparecchiature elettriche ed elettroniche mediante le specifiche strutture di raccolta indicate dal governo o dagli enti pubblici locali. Il corretto smaltimento ed il riciclaggio aiuteranno a prevenire conseguenze potenzialmente negative per l'ambiente e per la salute dell'essere umano. Per ricevere informazioni più dettagliate circa lo smaltimento delle vecchie apparecchiature in Vostro possesso, Vi invitiamo a contattare gli enti pubblici di competenza, il servizio di smaltimento rifiuti o il negozio nel quale avete acquistato il prodotto.

## Declaration of Conformity

Česky [Czech]	UBIQUITI NETWORKS tímto prohlašuje, že toto UBIQUITI NETWORKS zařízení, je ve shod se základními požadavky a dalšími příslušnými ustanoveními směrnice 1999/5/ES.
Dansk [Danish]	Hermed, UBIQUITI NETWORKS, erklærer at denne UBIQUITI NETWORKS enhed, er i overensstemmelse med de væsentlige krav og øvrige relevante krav i direktiv 1999/5/EF.
Nederlands [Dutch]	Hierbij verklaart UBIQUITI NETWORKS, dat deze UBIQUITI NETWORKS apparaat, in overeenstemming is met de essentiële eisen en de andere relevante bepalingen van richtlijn 1999/5/EC.
English	Hereby, UBIQUITI NETWORKS, declares that this UBIQUITI NETWORKS device, is in compliance with the essential requirements and other relevant provisions of Directive 1999/5/EC.
Eesti [Estonian]	Käesolevaga UBIQUITI NETWORKS kinnitab, et antud UBIQUITI NETWORKS seade, on vastavus olulistele nõuetele ja teistele asjakohastele sätetele direktiivi 1999/5/EÜ.
Suomi [Finnish]	Täten UBIQUITI NETWORKS vakuuttaa, että tämä UBIQUITI NETWORKS laite, on yhdenmukainen olennaisten vaatimusten ja muiden sitä koskevien direktiivin 1999/5/EY.
Français [French]	Par la présente UBIQUITI NETWORKS déclare que l'appareil UBIQUITI NETWORKS, est conforme aux exigences essentielles et aux autres dispositions pertinentes de la directive 1999/5/CE.

Deutsch [German]	Hiermit erklärt UBIQUITI NETWORKS, dass sich dieses UBIQUITI NETWORKS Gerät, in Übereinstimmung mit den grundlegenden Anforderungen und den anderen relevanten Vorschriften der Richtlinie 1999/5/EG befindet.
Ελληνική [Greek]	Δια του παρόντος, UBIQUITI NETWORKS, δηλώνει ότι αυτή η συσκευή UBIQUITI NETWORKS, είναι σε συμμόρφωση με τις βασικές απαιτήσεις και τις λοιπές σχετικές διατάξεις της οδηγίας 1995/5/EK.
Magyar [Hungarian]	Ezennel UBIQUITI NETWORKS kijelenti, hogy ez a UBIQUITI NETWORKS készülék megfelel az alapvető követelményeknek és más vonatkozó 1999/5/EK irányelv rendelkezéseit.
Íslenska [Icelandic]	Hér, UBIQUITI NETWORKS, því yfir að þetta UBIQUITI NETWORKS tæki er í samræmi við grunnkröfur og önnur viðeigandi ákvæði tilskipun 1999/5/EC.
Italiano [Italian]	Con la presente, UBIQUITI NETWORKS, dichiara che questo dispositivo UBIQUITI NETWORKS, è conforme ai requisiti essenziali ed alle altre disposizioni pertinenti della direttiva 1999/5/CE.
Latviski [Latvian]	Ar šo, UBIQUITI NETWORKS, deklarē, ka UBIQUITI NETWORKS ierīce, ir saskaņā ar būtiskajām prasībām un citiem attiecīgiem noteikumiem Direktīvā 1999/5/EK.
Lietuviškai [Lithuanian]	UBIQUITI NETWORKS deklaruoja, kad šis UBIQUITI NETWORKS įrenginys atitinka esminius reikalavimus ir kitas 1999/5/EB Direktyvos nuostatas.
Malti [Maltese]	Hawnhekk, UBIQUITI NETWORKS, tiddikjara li dan il-mezz UBIQUITI NETWORKS huwa konformi mar-rekwiżiti essenzjali u dispożizzjonijiet rilevanti oħrajn ta 'Direttiva 1999/5/EC.
Norsk [Norwegian]	Herved UBIQUITI NETWORKS, erklærer at denne UBIQUITI NETWORKS enheten, er i samsvar med de grunnleggende kravene og andre relevante bestemmelser i direktiv 1999/5/EF.
Slovensky [Slovak]	Týmto UBIQUITI NETWORKS, prehlasuje, že toto UBIQUITI NETWORKS zariadenie, je v súlade so základnými požiadavkami a ďalšími relevantnými ustanoveniami smernice 1999/5/ES.
Svenska [Swedish]	Härmed UBIQUITI NETWORKS, intygat att denna UBIQUITI NETWORKS enhet är i överensstämmelse med de väsentliga egenskapskrav och övriga relevanta bestämmelser som framgår av direktiv 1999/5/EG.
Español [Spanish]	Por medio de la presente UBIQUITI NETWORKS declara que este dispositivo UBIQUITI NETWORKS, cumple con los requisitos esenciales y cualesquiera otras disposiciones aplicables o exigibles de la Directiva 1999/5/CE.
Polski [Polish]	Niniejszym, Ubiquiti Networks, oświadcza, że urządzenie UBIQUITI NETWORKS, jest zgodny z zasadniczymi wymaganiami oraz pozostałymi stosownymi postanowieniami Dyrektywy 1999/5/EC.
Português [Portuguese]	UBIQUITI NETWORKS declara que este dispositivo UBIQUITI NETWORKS, está conforme com os requisitos essenciais e outras disposições da Directiva 1999/5/CE.
Română [Romanian]	Prin prezenta, UBIQUITI NETWORKS declară că acest dispozitiv UBIQUITI NETWORKS este în conformitate cu cerințele esențiale și alte prevederi relevante ale Directivei 1999/5/CE.

## Online Resources

Support [support.ubnt.com](http://support.ubnt.com)

Community [community.ubnt.com](http://community.ubnt.com)

Downloads [downloads.ubnt.com](http://downloads.ubnt.com)





[www.ubnt.com](http://www.ubnt.com)

© 2015-2016 Ubiquiti Networks, Inc. All rights reserved. Ubiquiti, Ubiquiti Networks, the Ubiquiti U logo, the Ubiquiti beam logo, airFiber, airMAX, EdgeMAX, EdgePoint, EdgePower, EdgeSwitch, FiberProtect, PicoStation, and TOUGH Cable are trademarks or registered trademarks of Ubiquiti Networks, Inc. in the United States and in other countries. All other trademarks are the property of their respective owners.



640-00221-04