





AX5400 Dual-Band 6-Stream Gigabit Wi-Fi 6 Router


Faster. Broader. Unstoppable.




Archer AX73

 Warp-Speed Wi-Fi
up to 5400 Mbps[†]

 Extensive Coverage
6 High-Performance Antennas

 Connect More Devices
OFDMA + MU-MIMO^{†*}

 Powerful Processing
1.5 GHz Triple-Core CPU

Highlights

Wi-Fi 6^E Faster. Broader. Unstoppable.

The Archer AX73, based on the next generation 802.11ax Wi-Fi technology, takes your Wi-Fi to the next level while being backwards compatible with 802.11a/b/g/n/ac Wi-Fi standards.



Gigabit Wi-Fi for 8K Streaming

Equipped with an advanced 4x4 HT160 structure for peak speeds at 4804 Mbps on the 5 GHz band, giving you full access to multiple 8K streaming and high-speed downloading.^{†‡}



Connect Numerous Devices

OFDMA and MU-MIMO transmit data to multiple devices simultaneously across 6 streams, drastically reducing lag and allowing more applications to run at the same time.[‡]



Smart Power Saving

Target Wake Time schedules the connection time of battery-powered devices to reduce their power consumption.[‡]



Backwards Compatible

Take your Wi-Fi to the next level while being backwards compatible with 802.11a/b/g/n/ac Wi-Fi standards.

TP-Link HomeShield

TP-Link's premium security services keep your home network safe with cutting-edge features for network and IoT protection.*



Network Protection

Detect cyber threats to keep your privacy and connected devices well protected.



Quality of Service (QoS)

Prioritize your bandwidth needs to get a faster networking experience.



Parental Controls

Manage online time and block inappropriate content to keep families healthy online.



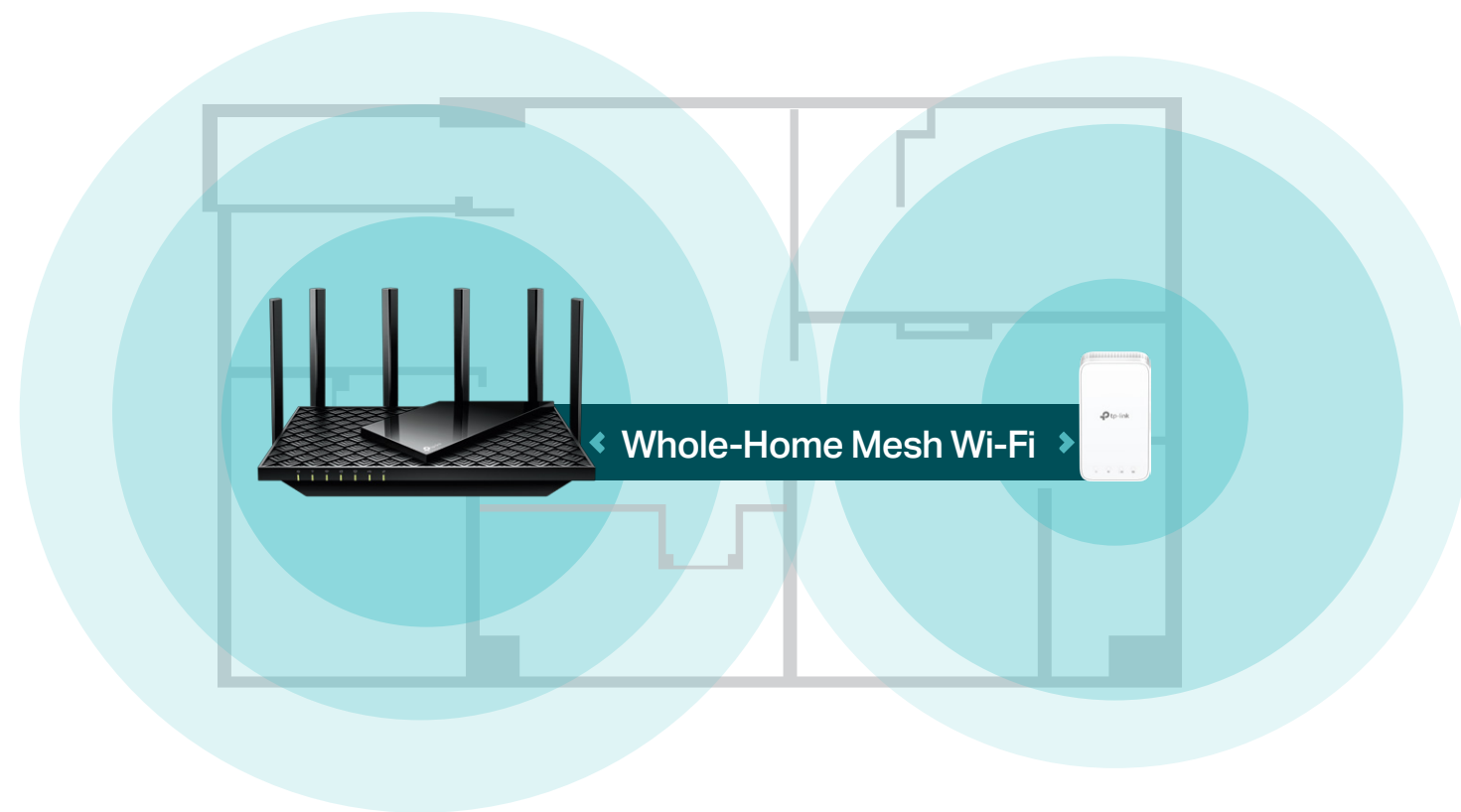
Comprehensive Reports

Gain full statistics and insights to help you know your home network better.

Highlights

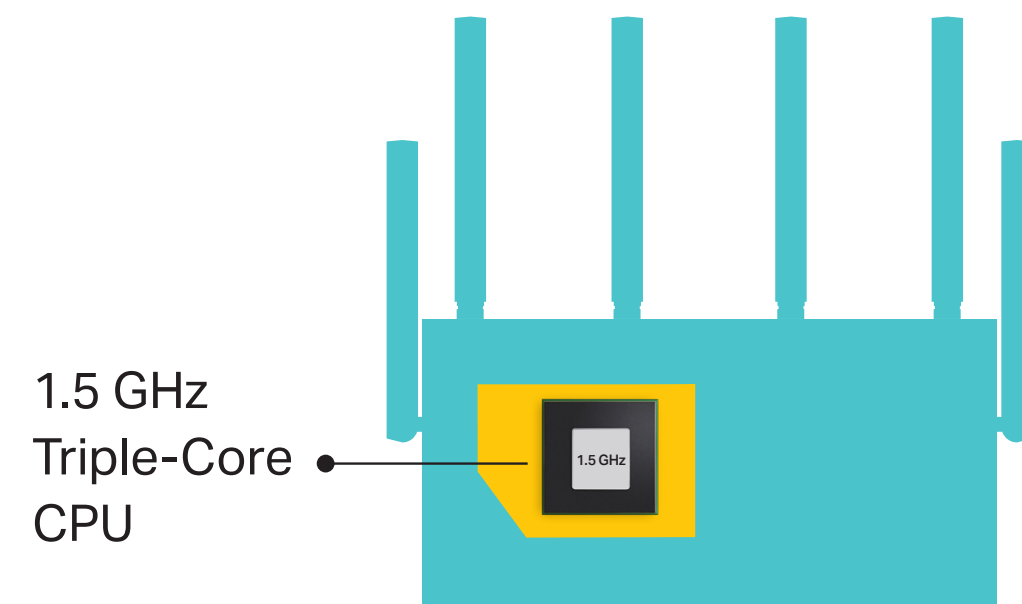
Flexible Whole-Home Wi-Fi

Six high-performance antennas and Beamforming deliver broad coverage. Furthermore, Archer AX73 supports OneMesh™ to form seamless whole-home coverage, preventing drops and lag when moving between signals.



Powerful 1.5 GHz CPU

A 1.5 GHz Triple-Core CPU provides the processing ability to handle enormous data throughput and minimizes the lag within your home network, giving you a smooth online experience.



Highlights

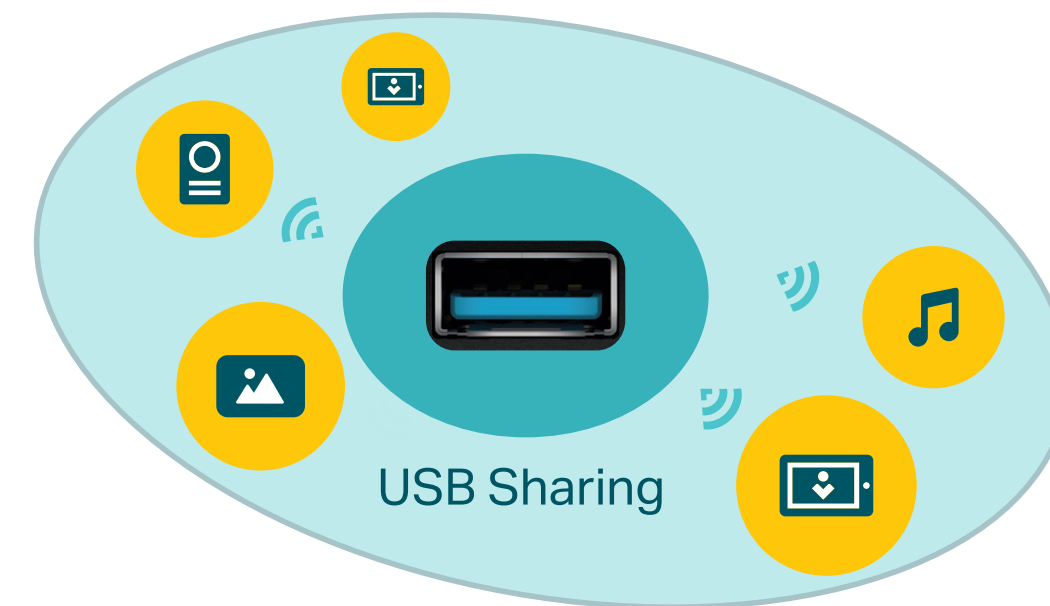
WPA3 Security

The latest Wi-Fi security protocol, WPA3, brings new capabilities to improve cybersecurity. More secure encryption in Wi-Fi password safety and enhanced protection against brute-force attacks combine to safeguard your home Wi-Fi.*



USB Media Sharing

Plug in your external drives to quickly share photos, movies, or music across your home network, or just simply set up cloud backup storage. Use with Guest Network to create a separate environment for private and safe sharing.

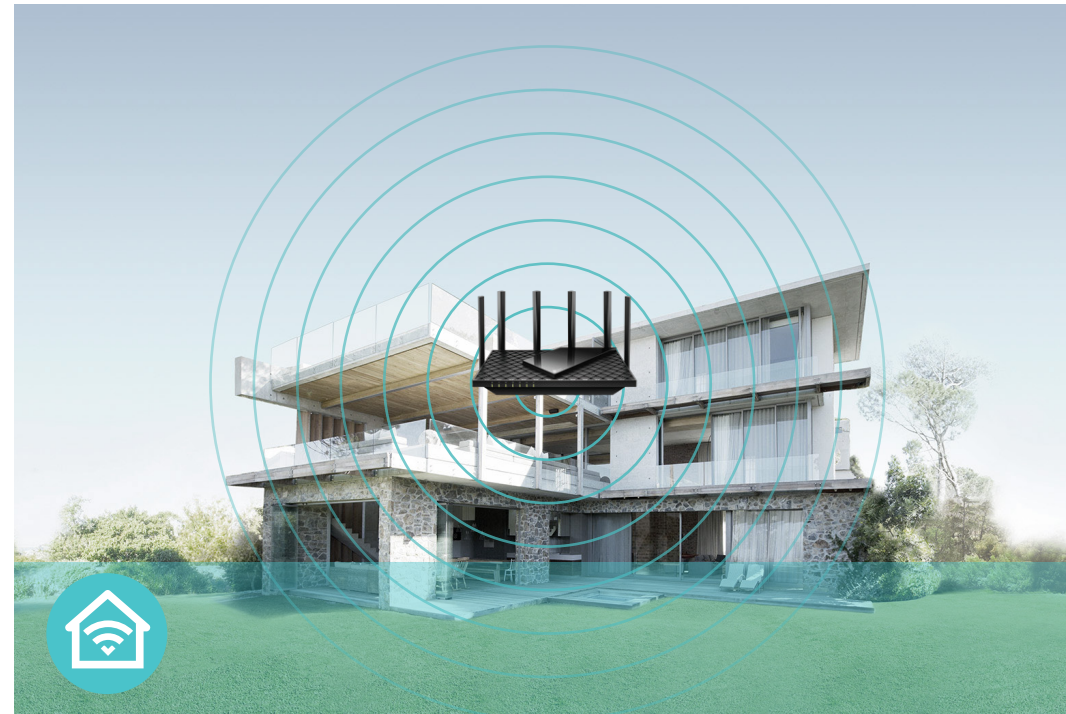


Features



Speed

- **Warp-Speed Wi-Fi** – 5.4 Gbps Wi-Fi for faster browsing, streaming, and downloading—all at the same time[†]
- **Wi-Fi 6 Technology** – Wi-Fi 6 (802.11ax) features advanced technologies, including OFDMA, MU-MIMO, HT160, and 1024-QAM, drastically increasing the speed and efficiency of your entire network[‡]
- **Connect More, Stay Fast** – Supports MU-MIMO and OFDMA to reduce congestion and quadruple your average throughput[§]



Wi-Fi Range

- **Ultimate Range Wi-Fi** – Six high-gain external antennas deliver a Wi-Fi signal to every corner of your home, making all of your connections more efficient and stable
- **Beamforming Technology** – Concentrates Wi-Fi signals towards individual devices to ensure stronger connections
- **Seamless OneMesh network** – Transfer between signals without any drops or lag and manage your whole network using a centralized panel



Reliability

- **Powerful Processing** – 1.5 GHz Triple-Core CPU guarantees reliable, high-performance output
- **Secure VPN Access** – Connects to a private network with a safe and secure OpenVPN and PPTP VPN connection
- **Airtime Fairness** – Balances bandwidth of connected devices to improve overall throughput and efficiency
- **Smart Connect** – Intelligently switches each device's connection to the optimum available Wi-Fi band

Features



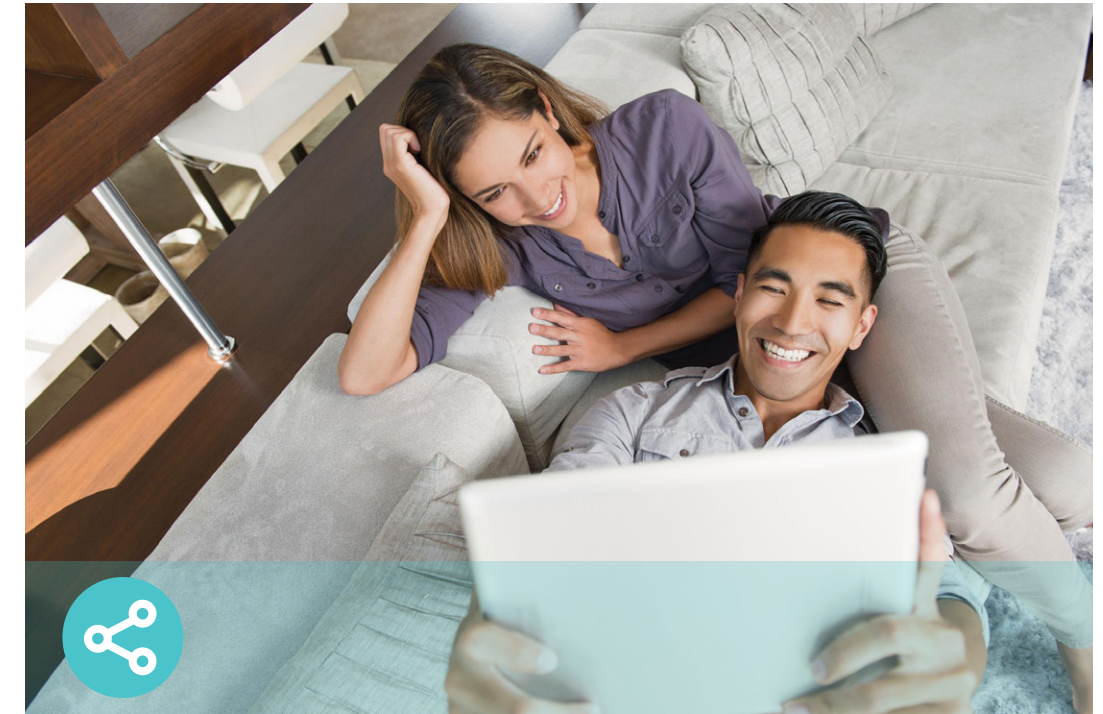
Ease of Use

- Intuitive Web UI – Ensures quick and simple installation without hassle
- WPS (Wi-Fi Protected Setup) – Help you to quickly and securely connect your devices to the router's network with a tap
- Power On/Off – Conveniently power on or off your router as required
- Hassle-free Management with Tether App – Network management is made easy with the TP-Link Tether app, available on any Android and iOS device



Security

- HomeShield – TP-Link's premium security services keep your home network safe with cutting-edge features for network and IoT protection
- Guest Network – Provides separate access for guests to secure the home network
- Access Control – Establishes a whitelist or blacklist to allow or restrict certain devices to access the internet
- Encryptions for Secure Network – WPA/WPA2-Personal, WPA2/WPA3-Personal, WPA/WPA2-Enterprise encryptions provide active protection against security threats



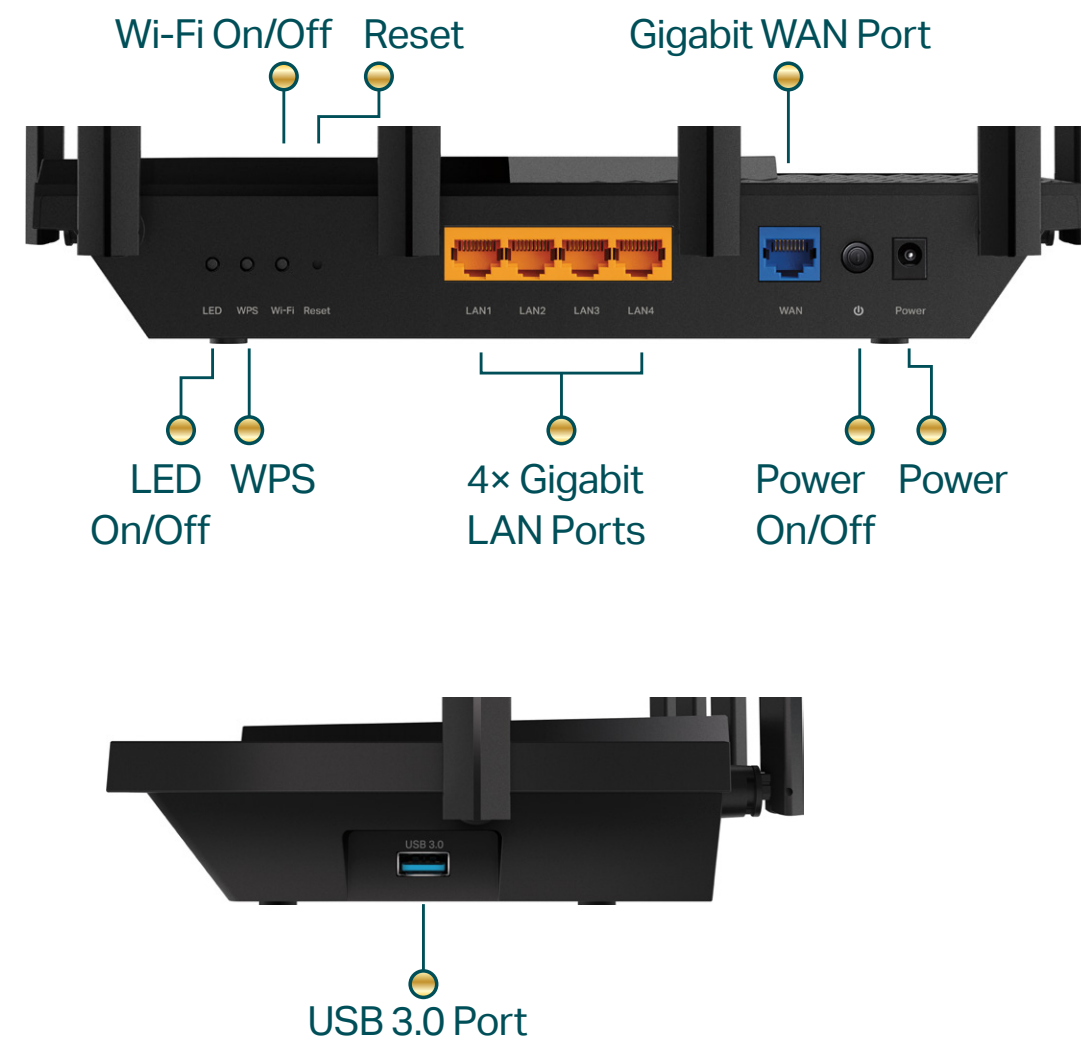
Easy Sharing

- USB Port – Connects external storage devices to rapidly share files, photos, and videos
- Built-in Media Server – Allows you to play music, watch videos and view photos from any device on your network

Specifications

Hardware

- Antennas: 6× High-Performance Antennas
- Ethernet Ports:
1× Gigabit WAN Port + 4 × Gigabit LAN Ports
- USB Ports: 1× USB 3.0 Port
- Dimensions: 10.7 × 5.8 × 1.9 in (272.5 × 147.2 × 49.2 mm)



Wireless

- Wireless: 4804 Mbps (5 GHz, 11ax) + 574 Mbps (2.4 GHz, 11ax), compatible with 11a/b/g/n/ac Wi-Fi standards
- Frequency: 2.4 GHz and 5 GHz
- Transmit Power:
CE: <20dBm (2.4GHz); <23dBm (5.15GHz~5.35GHz); <30dBm (5.47GHz~5.725GHz)
FCC: <24dBm (5.25GHz~5.35GHz&5.47GHz~5.725GHz)
<30dBm (2.4GHz & 5.15GHz~5.25GHz&5.725GHz~5.825GHz)
- Reception Sensitivity:
2.4GHz:
11ac VHT20 MCS0:-94.5dBm, 11ac VHT20 MCS8:-72.5dBm,
11ac VHT40 MCS0:-92.5dBm, 11ac VHT40 MCS9:-69.5dBm,
11ax HE20 MCS0:-95dBm, 11ax HE20 MCS11:-64.5dBm,
11ax HE40 MCS0:-92.5dBm, 11ax HE40 MCS11:-62dBm
5GHz:
11ac VHT20 MCS0:-97dBm, 11ac VHT20 MCS8:-74dBm,
11ac VHT40 MCS0:-95dBm, 11ac VHT40 MCS9:-70dBm,
11ac VHT80 MCS0:-91.5dBm, 11ac VHT80 MCS9:-66dBm,
11ac VHT160 MCS0:-86dBm, 11ac VHT160 MCS9:-61dBm,
11ax HE20 MCS0:-95dBm, 11ax HE20 MCS11:-64dBm,
11ax HE40 MCS0:-91.5dBm, 11ax HE40 MCS11:-62dBm,
11ax HE80 MCS0:-88dBm, 11ax HE80 MCS11:-58dBm,
11ax HE160 MCS0:-85.5dBm, 11ax HE160 MCS11:-55dBm
- Wireless Function: Enable/Disable Wireless Radio, WMM, Wireless Statistics
- Wireless Security: WPA/WPA2-Personal, WPA2/WPA3-Personal, WPA/WPA2-Enterprise

Specifications

Software

- WAN Type: Dynamic IP/Static IP/PPPoE/PPTP(Dual Access)/L2TP(Dual Access)
- Management: Access Control, Local Management, Remote Management
- DHCP: Server, DHCP Client List, Address Reservation
- NAT Forwarding: Port Forwarding, Port Triggering, UPnP, DMZ
- Dynamic DNS: DynDns, NO-IP, TP-Link
- Access Control: Parental Controls, Local Management Control, Host List, White List, Black List
- Firewall Security: SPI Firewall, IP and MAC Address Binding
- Protocols: IPv4, IPv6
- USB Sharing: Supports Samba(Storage)/FTP Server/Media Server
- Guest Network: 2.4 GHz Guest Network, 5 GHz Guest Network
- VPN Server: OpenVPN, PPTP VPN

Others

- Certification:
FCC, CE, RoHS
- System Requirements:
Microsoft Windows 98SE/NT/2000/XP/Vista™/7/8/8.1/10, MAC OS, NetWare, UNIX or Linux

Internet Explorer 11, Firefox 12.0, Chrome 20.0, Safari 4.0, or other Java-enabled browser

Cable or DSL Modem

Subscription with an internet service provider (for internet access)
- Environment:
Operating Temperature: 0°C~40°C (32°F ~104°F)
Operating Humidity: 10%~90% non-condensing
- Package Contents
Wireless Router Archer AX73

Power Adapter

RJ45 Ethernet Cable

Quick Installation Guide



For more information, please visit

<http://www.tp-link.com/products/details/Archer-AX73.html>

or scan the QR code left

Attention: This device may only be used indoors in all EU member states and EFTA countries.

¹Maximum wireless signal rates are the physical rates derived from IEEE Standard 802.11 specifications. Actual wireless data throughput, wireless coverage, and number of connected devices are not guaranteed and will vary as a result of network conditions, client limitations, and environmental factors, including building materials, obstacles, volume and density of traffic, and client location.

²Use of 802.11ax (Wi-Fi 6) and its features including OFDMA, 1024-QAM, HT160, and Target Wake Time requires clients support the corresponding features. Actual power reduction by Target Wake Time may vary as a result of network conditions, client limitations, and environmental factors.

³The 802.11ax white paper defines standardized modifications to both the IEEE 802.11 physical layers (PHY) and the IEEE 802.11 Medium Access Control (MAC) layer as enabling at least one mode of operation capable of supporting improvement of at least four times the average throughput per station (measured at the MAC data service access point) in a dense deployment scenario.

⁴HomeShield includes the Free Basic Plan. Fees apply for the Pro Plan. Visit tp-link.com/homeshield for more information

⁵Use of MU-MIMO and/or WPA3 requires clients to also support the corresponding features.

⁶This router may not support all the mandatory features as ratified in Draft 3.0 of the IEEE 802.11AX specification.

⁷Further software upgrades for feature availability may be required.

©2020 TP-Link