



AC750 Dual Band Wi-Fi Router

3in1:
Router,
Access Point,
Range Extender



Archer C24



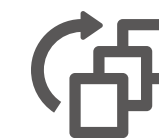
300 Mbps + 433 Mbps
Dual Band Wi-Fi



Superior
Coverage



IPTV and 4K TV
Supported

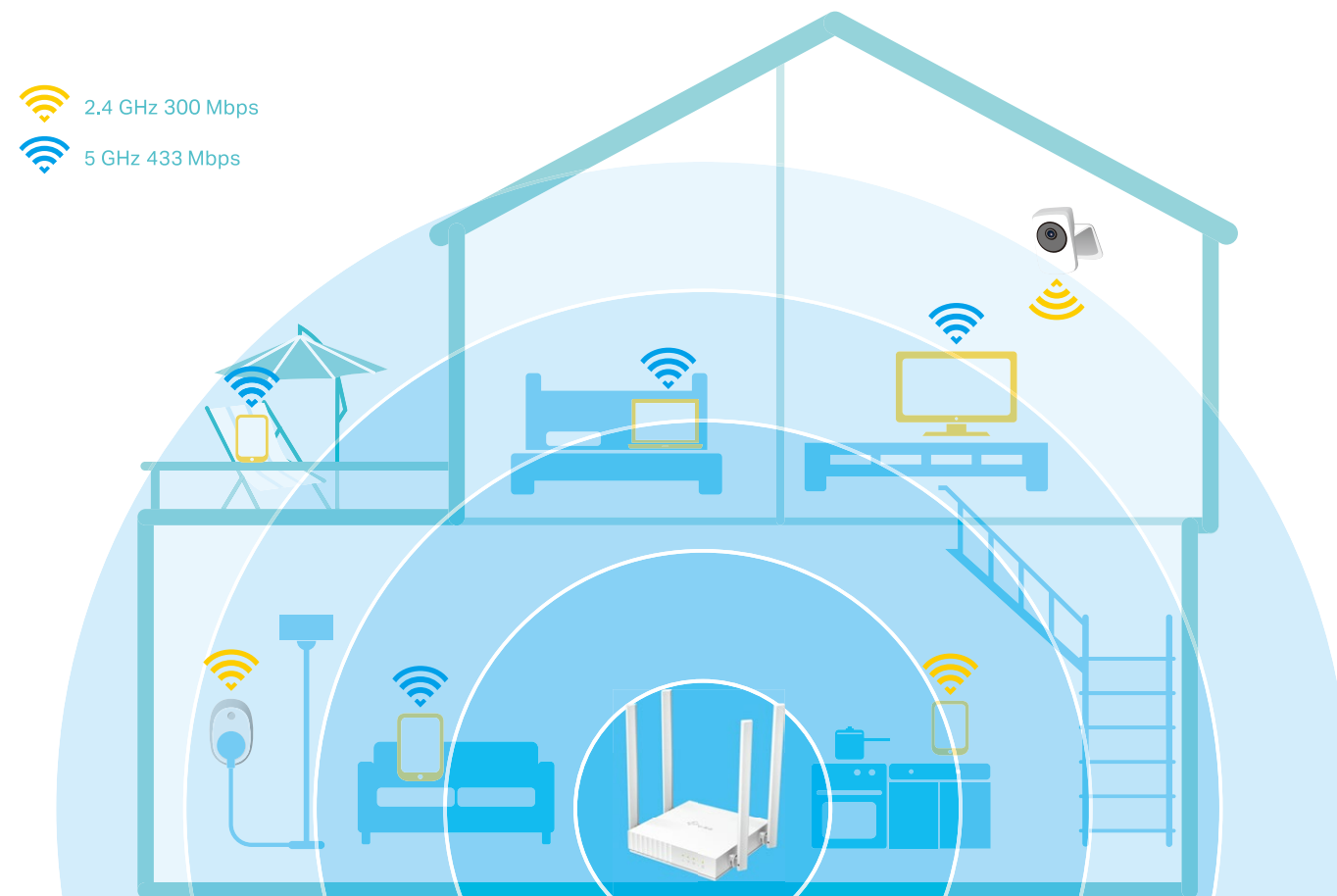


Multiple-Modes

Highlights

Stream-Ready AC Wi-Fi for Your Home

Press play and forget about buffering with the Archer C24. The Wireless AC router's superior coverage lets you enjoy a high-speed network for all of your internet needs, whether for work or play. With rates up to 300 Mbps, the 2.4 GHz band is perfect for sending emails, browsing the web, listening to music and so on. For more demanding applications, the 5 GHz band delivers up to 433 Mbps for HD streaming and gaming.



Multi-Mode Function

In addition to serving as a wireless AC router, the Archer C24 can also function as a wireless access point or range extender, providing you with the flexibility you need in any situation. The mode can be easily setup in the web management page or Tether App.

Router Mode



Access Point



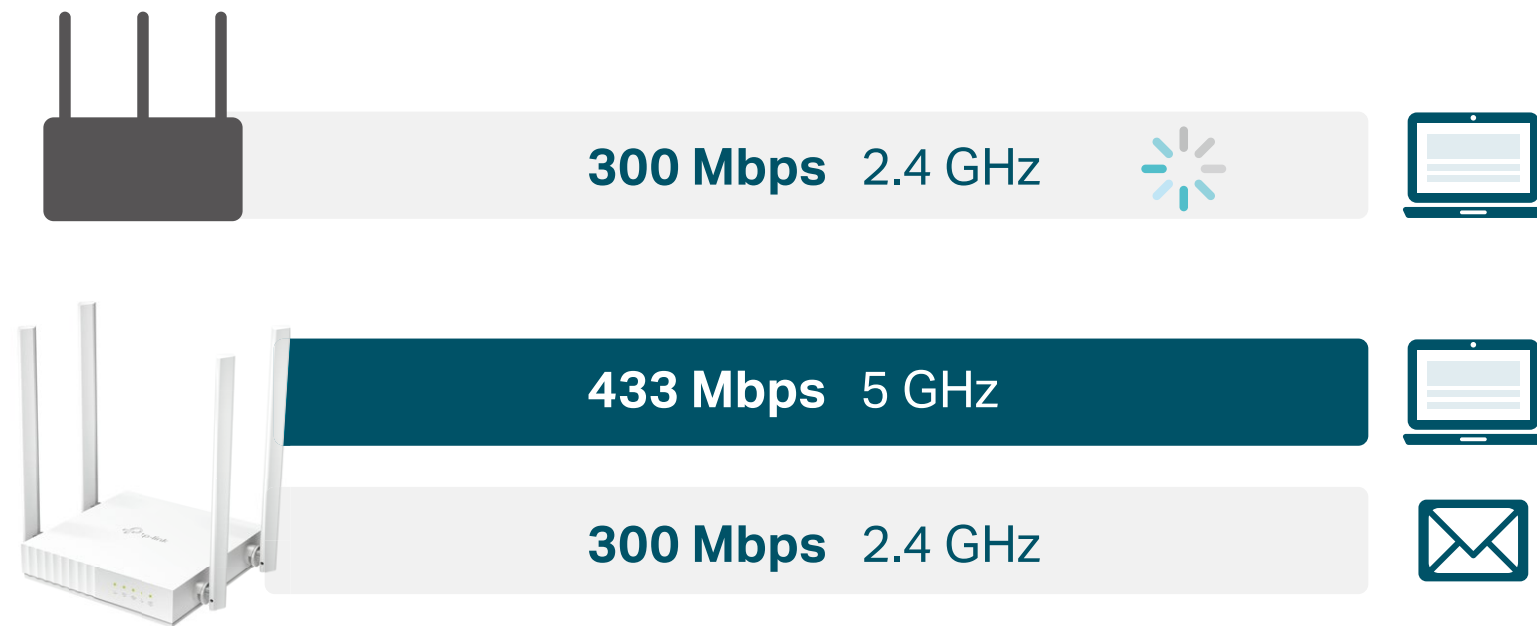
Extender Mode



Highlights

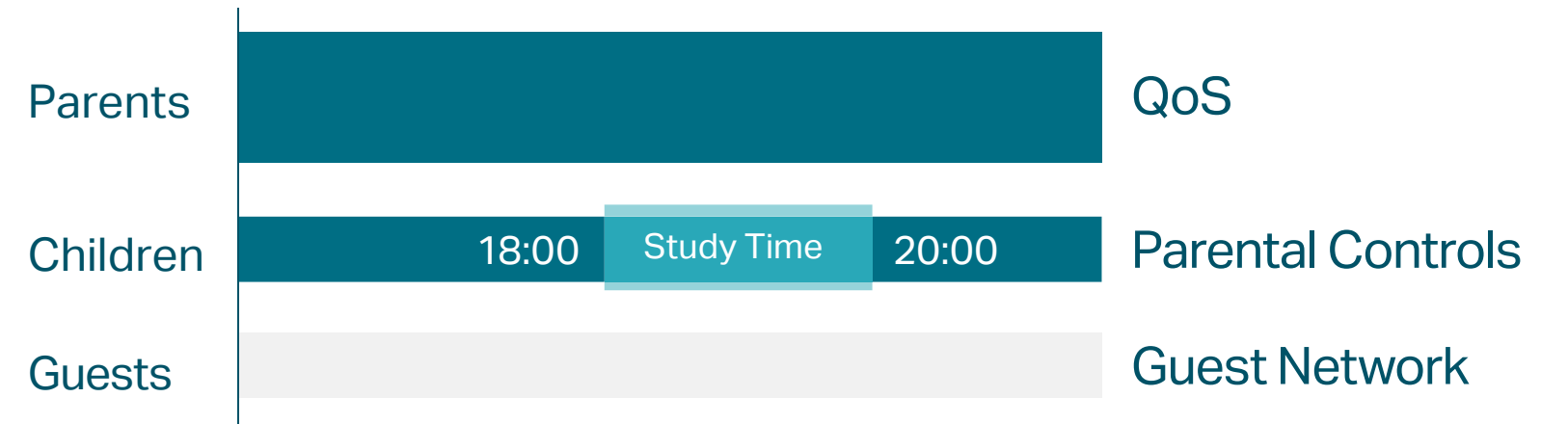
Fast, Reliable Connection

Get the most of your internet access with dual-band Wi-Fi and 4 high-speed Ethernet ports. 4 omni-directional antennas provide a 2.4 GHz and 5 GHz signal throughout your home, so the whole family can enjoy reliable Wi-Fi on every device.

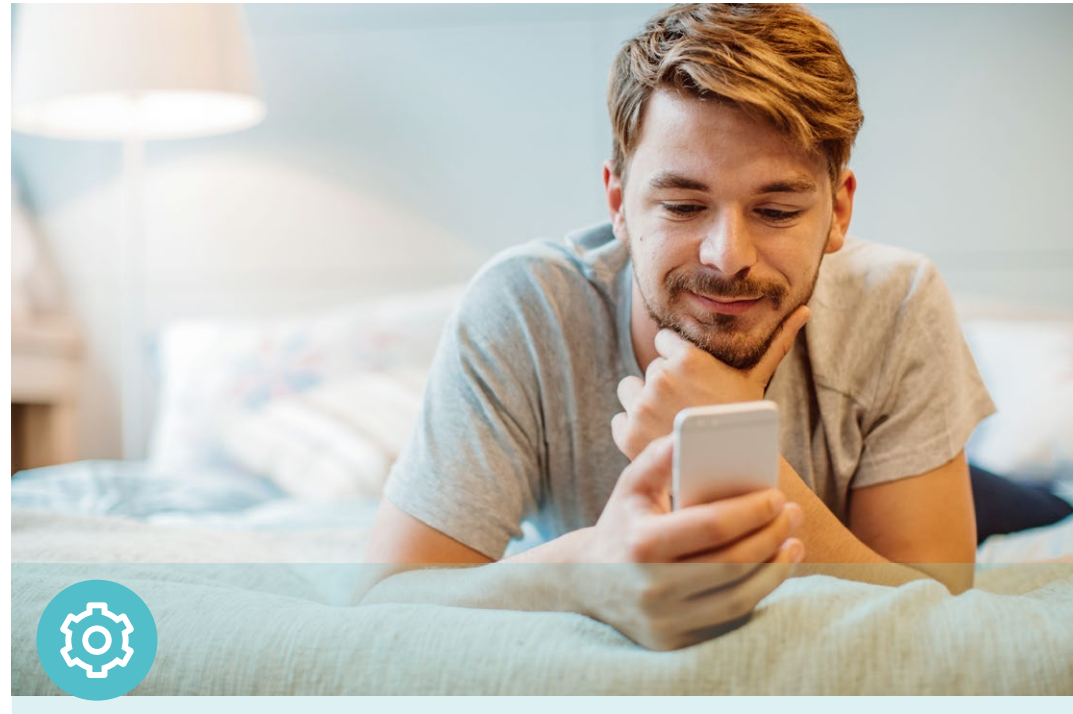


Versatile Management

Built-in tools make it easier to manage your home network, including QoS, Parental Controls, and Guest Network.



Features



Ease of Use

- WPS – Make secure wireless connection quick and easy with the push of a button
- Compact and Mountable – Designed to conserve space and complement any décor.
- Intuitive Web UI – Ensure quick and simple installation without hassle
- Hassle-free Management with Tether App – Network management is made easy with the TP-Link Tether App, available on any Android or iOS device



Reliability

- Ultimate Wireless Speed – 300 Mbps on 2.4 GHz and 433 Mbps on 5 GHz Wi-Fi speed for lag-free work
- 802.11ac – Backward compatible with 802.11b/g/n products
- IPTV – Support IGMP Proxy/Snooping, Bridge and Tag VLAN to optimize IPTV streaming
- QoS– Advanced QoS makes it easier for you to manage the bandwidth of connected devices
- IPV6 – Supports IPv6 to work with more ISPs



Security

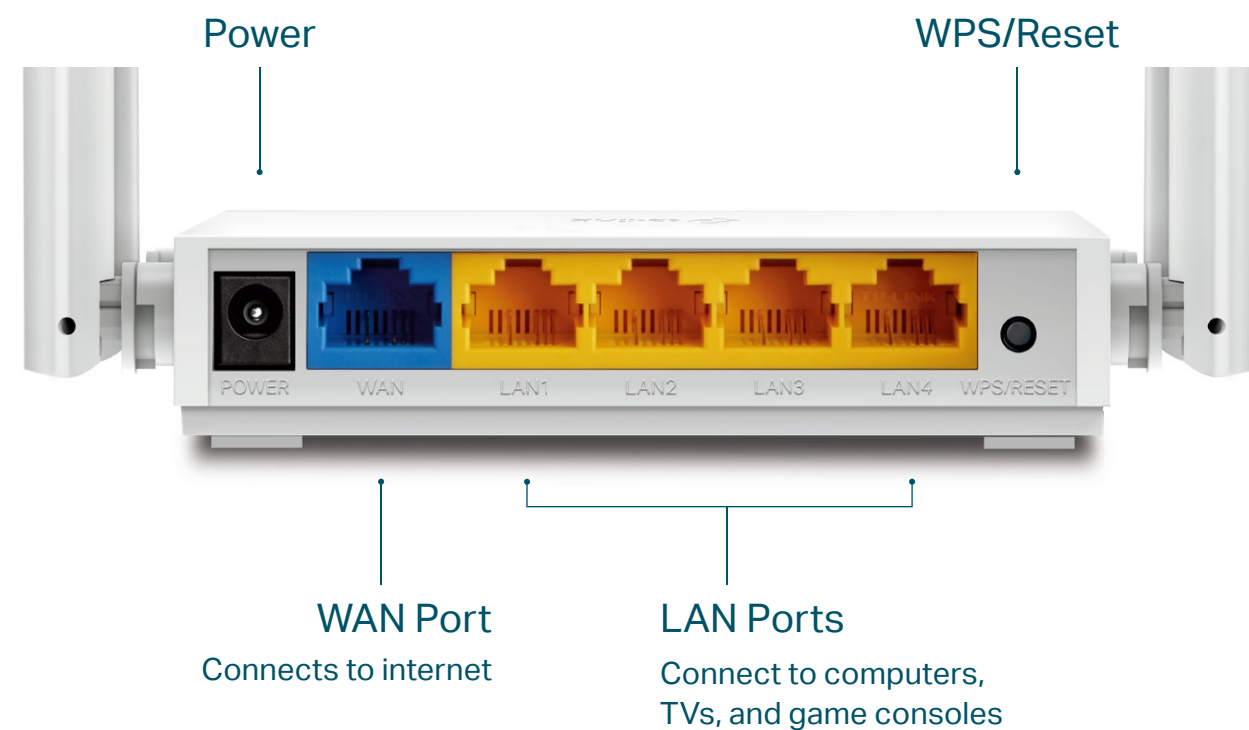
- Guest Network – Provide separate access for guests while securing the home network
- Access Control – Establish a whitelist or blacklist to allow or block certain devices from accessing the internet
- Parental Controls – Manage when and how connected devices can access the internet
- Encryptions for Secure Network – WPA-PSK/WPA2-PSK encryptions provide active protection against security threats



Specifications

Hardware

- Ethernet Ports: 4 x 10/100Mbps LAN Ports, 1 x 10/100Mbps WAN Port
- Buttons: Reset/WPS Button
- Antennas: 4 Fixed Omni Directional Antennas
- External Power Supply: 9VDC/0.6A
- Dimensions (W x D x H): 4.5x4.2x1.0 in. (115x106.7x24.3 mm)



Wireless

- Wireless Standards: IEEE 802.11ac/n/a 5GHz, IEEE 802.11b/g/n 2.4GHz
- Frequency: 2.4GHz and 5GHz
- Signal Rate:
 - 5 GHz: Up to 433 Mbps
 - 2.4 GHz: Up to 300 Mbps
- Reception Sensitivity:
 - 5GHz:
 - 11a 54M: -76dBm; 11ac VHT20 MCS8: -70dBm;
 - 11ac VHT40 MCS9: -65.5dBm; 11ac VHT80 MCS9: -61.5dBm
 - 2.4GHz:
 - 11g 54M: -76dBm; 11n; HT20 MCS7: -74dBm;
 - 11n HT40 MCS7: -71dBm
- Wireless Function: Enable/Disable Wireless Radio, WMM
- Wireless Security: 64/128-bit WEP, WPA / WPA2, WPA-PSK / WPA2-PSK encryption

Specifications

Software

- Operation Modes: Wireless Router, Range Extender, Access Point
- WAN Type: Dynamic IP, Static IP, PPPoE, PPTP(Dual Access), L2TP(Dual Access)
- DHCP: DHCP Server, DHCP Client List, Address Reservation
- Quality of Service: WMM, Bandwidth Control
- NAT Forwarding: Port Forwarding, Port Triggering, UPnP, DMZ
- Dynamic DNS: DynDns, NO-IP
- Firewall Security: SPI Firewall, IP and MAC Address Binding
- Protocols: IPv4, IPv6
- Management: Parental Controls, Access Control, Local Management, Remote Management
- Guest Network: 2.4GHz Guest Network, 5GHz Guest Network

Others

- Certification
FCC, CE, RoHS
- Requirements
Microsoft Windows 10/8.1/8/7/Vista/XP/2000/NT/98SE, MAC OS, NetWare, UNIX or Linux
Internet Explorer 11, Firefox 12.0, Chrome 20.0, Safari 4.0, or other Java-enabled browser
Cable or DSL Modem
Subscription with an Internet Service Provider (for internet access)
- Environment
Operating Temperature: 0°C~40°C (32°F ~104°F)
Storage Temperature: -40°C~60°C (-40°F ~140°F)
Operating Humidity: 10%~90% non-condensing
Storage Humidity: 5%~90% non-condensing
- Package Contents
Wireless Router Archer C24
Power Adapter
RJ-45 Ethernet Cable
Quick Installation Guide



For more information, please visit

https://www.tp-link.com/products/details/?model=Archer+C24_V1

or scan the QR code left

Specifications are subject to change without notice. TP-Link is a registered trademark of TP-Link Technologies Co., Ltd. Other brands and product names are trademarks or registered trademarks of their respective holders. No part of the specifications may be reproduced in any form or by any means or used to make any derivative such as translation, transformation, or adaptation without permission from TP-Link Technologies Co., Ltd. Copyright ©2020 TP-Link Technologies Co., Ltd. All rights reserved.

*Maximum wireless signal rates are the physical rates derived from IEEE Standard 802.11 specifications. Actual wireless data throughput and wireless coverage are not guaranteed and will vary as a result of network conditions, client limitations, and environmental factors, including building materials, obstacles, volume and density of traffic, and client location.

www.tp-link.com

TP-Link AC750 Dual Band Wi-Fi Router Archer C24