

# Quick Installation Guide

## Mobile Wi-Fi

\* Images are for demonstration only.

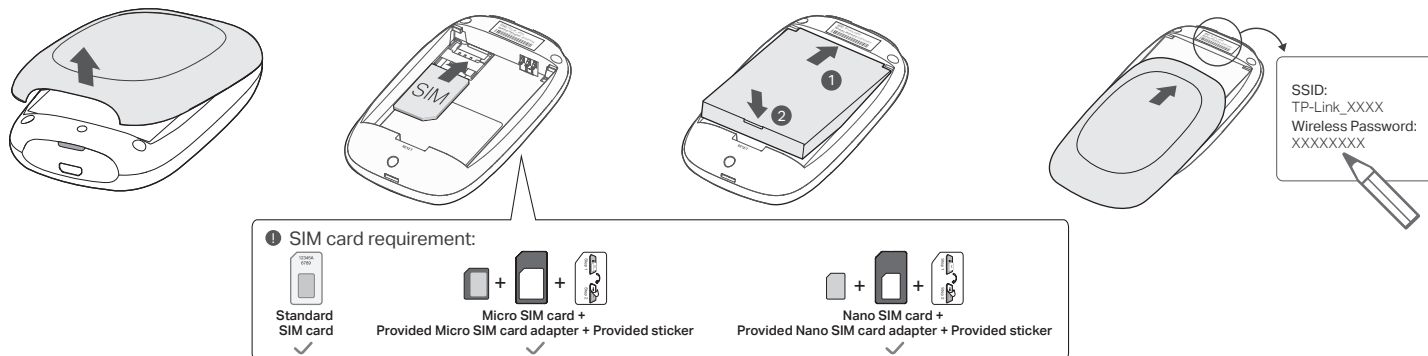
## LED Indicators

LED	Status	Explanation
(Wi-Fi)	On/Off	Wi-Fi is enabled or disabled.
(Internet)	On/Off	Internet service is available or unavailable.
(Battery)	Solid Green	Mobile Wi-Fi has enough power or is fully charged.
	Blinking Red	The battery level is lower than 10%.
	Blinking Green	Mobile Wi-Fi is charging.
	Off	Power is off.

**i** The LEDs will turn off automatically after idling for 30 seconds. To check the LED status, press the Power button to turn them on again.

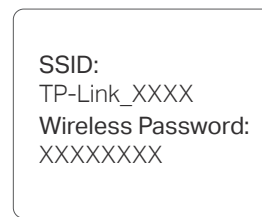
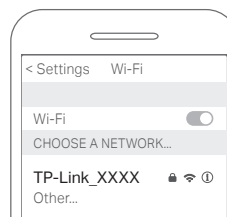
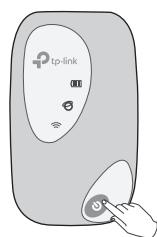
## 1. Install the SIM Card and Battery

- Remove the back cover.
- Install your SIM card.
- Install the provided battery.
- Note down the default SSID and Wireless Password. Then replace the cover.

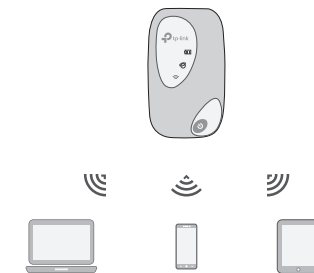


## 2. Connect to the Internet

- Press and hold the Power button to power on the Mobile Wi-Fi.
- Connect your wireless device to the Mobile Wi-Fi using the SSID and the Wireless Password you have noted down.



Enjoy the internet!



- i** If you cannot access the internet, refer to **FAQ > Q1**.
- By default, Power Saving is enabled and the Mobile Wi-Fi will turn off Wi-Fi when no wireless devices are connected to it for 10 minutes. To resume the Wi-Fi connection, press the Power button.

# Managing Your Mobile Wi-Fi

Manage your Mobile Wi-Fi using any of the methods below. You can customize Wi-Fi settings, block Wi-Fi devices and more.

## tpMiFi App

1. Get the **tpMiFi** app from App Store or Google Play, or by scanning the QR code.



2. Connect your wireless device to the Mobile Wi-Fi.
3. Launch **tpMiFi** and enter **admin** to log in.

## Web Management Page

1. Connect your wireless device to the Mobile Wi-Fi. If it is a computer, make sure it is set to obtain an IP address automatically.
2. Launch a web browser and visit <http://tplinkmifi.net> or <http://192.168.0.1>. Enter **admin** to log in.



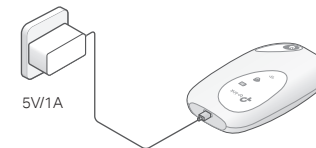
For technical support, user manuals and more information, please visit <https://www.tp-link.com/support>, or simply scan the QR code.



# Charging Your Mobile Wi-Fi

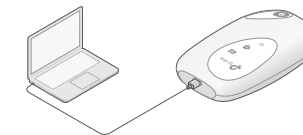
## Method 1


Via a Wall Outlet (Recommended)



## Method 2

Via a Computer



- The Battery LED  will be solid green when the Mobile Wi-Fi is fully charged.
- The power adapter is not provided by TP-Link.

# FAQ (Frequently Asked Questions)

## Q1. What should I do if I cannot access the internet (the Internet LED doesn't light up)?

A. Visit the web management page (<http://tplinkmifi.net>) on your phone, enter **admin** to log in, then check the following:

### • Check PIN status

If the current SIM card status is **PIN Locked**, your SIM card is PIN protected and you need to unlock it using the PIN code provided by your mobile carrier.

### • Verify the mobile carrier parameters

1. Go to **Dial-up**, tap **View profile details**, and verify that the parameters (i.e. APN, username and password) provided by your mobile carrier are correct.
2. If the parameters are not correct, return to the **Dial-up** page and create a new profile with the correct information.

### • Check the Data Roaming settings

If your SIM card is operated in a roaming service area, go to **Dial-up**, enable **Data Roaming** and tap **Done**.

### • Check Mobile Data

Go to **Dial-up** to verify that **Mobile Data** is On. If not, enable it and tap **Done**.

### • Check Data Limit

Go to **Device** > **Data Usage Settings** to check whether your data usage has exceeded the Total/Monthly allowance.

## Q2. How do I restore the Mobile Wi-Fi to its factory default settings?

A. With the Mobile Wi-Fi powered on, remove the cover, then use a pin to press and hold the **Reset** button until all LEDs turn on momentarily.

Note: Restoring the device to its factory defaults will clear all your settings.

# Safety Information

- Keep the device away from water, fire, humidity or hot environments.
- Do not attempt to disassemble, repair, or modify the device. If you need service, please contact us.
- Do not use the device where wireless devices are not allowed.
- Do not disassemble, crush, puncture, short external contacts, or dispose of the battery in fire or water.
- Do not leave a battery in an extremely high temperature surrounding environment that can result in an explosion or the leakage of flammable liquid or gas. Do not leave a battery subjected to extremely low air pressure that may result in an explosion or the leakage of flammable liquid or gas.

CAUTION: RISK OF EXPLOSION IF BATTERY IS REPLACED BY AN INCORRECT TYPE.

Please read and follow the above safety information when operating the device. We cannot guarantee that no accidents or damage will occur due to improper use of the device. Please use this product with care and operate at your own risk.