

Antenna for ALL BANDS cellular
 Antena za VSE mobilne komunikacije

P-60 5G 7003800 SMA

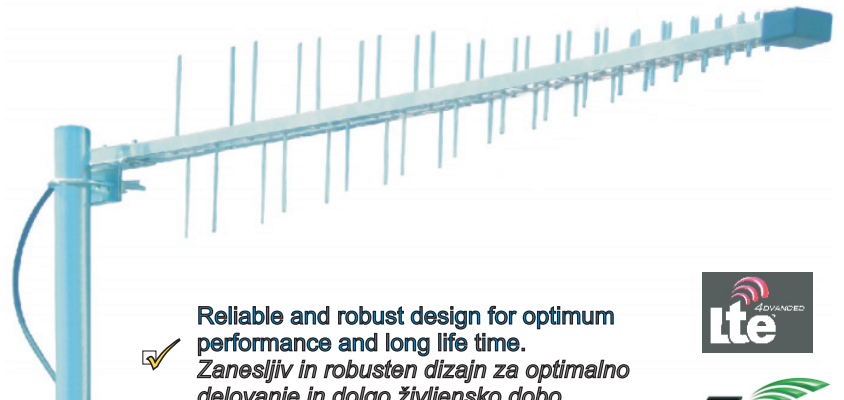
For: LTE(4G)+5G 700+800 / GSM 900 / DCS-LTE 1800 / UMTS (3G) / WI-FI / LTE 2,6GHz / 5G 3,5GHz

698 - 862 MHz / 880 - 960 MHz / 1710 - 1880 MHz / 1920 - 2170 MHz / 2,4 GHz / 2,5 - 2,7 GHz / 3,3 - 3,8 GHz

Support tech.: LTE (4G) + 5G 700+800, 1800, 2,6 (4G); HSPA+, HSDPA, UMTS-3G, HSUPA, GSM, EDGE, GPRS; MIMO, Wimax 2,3 GHz; CDMA2000, Wi-Fi 802.11, 5G 3,5 GHz ...

- ✓ **Covers frequency range 698 - 3800 MHz.**
 Pokriva frekvenčni pas 698 - 3800 MHz.
- ✓ **Easy to install. Antenna have coaxial cable POPE H155 (10 meters lenght) and "SMA" male connector *.**
 Enostavna montaža. Antena ima koaksialni kabel POPE H155 (10 m) in "SMA" moški konektor *.
- ✓ **Can be used for vertical polarisation.**
 Primerna za vertikalno polarizacijo.

* or N, FME, TNC ... connector on request
 ali N, FME, TNC ...konektor na zahtevo

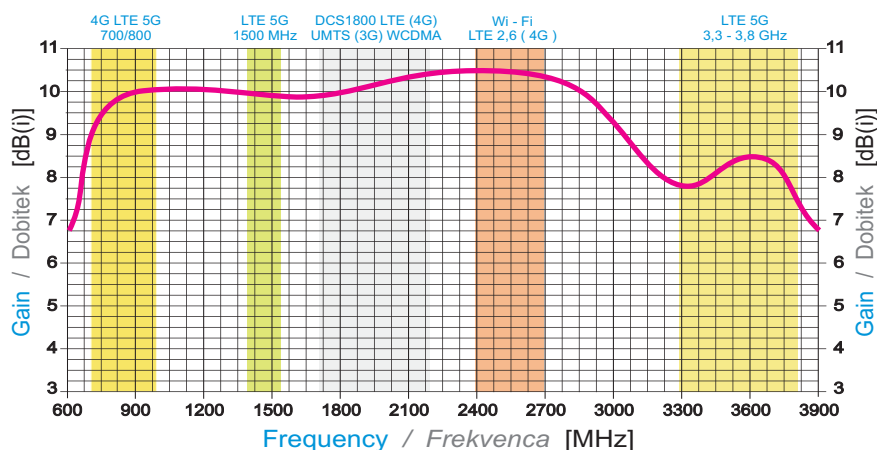


✓ **Reliable and robust design for optimum performance and long life time.**
 Zanesljiv in robusten dizajn za optimalno delovanje in dolgo življensko dobo.

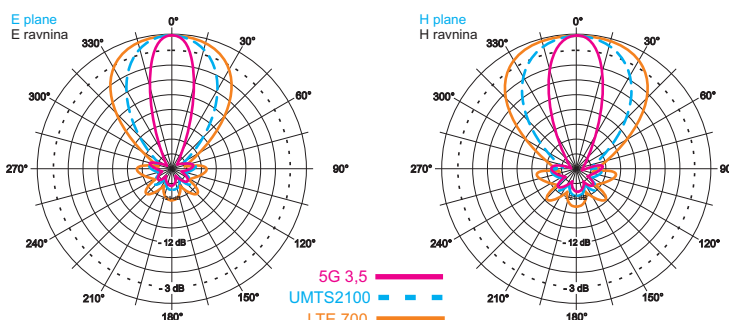
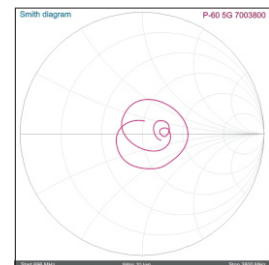


Technical data / Tehnični podatki :

Type	Freq. range	No. of elem.	Imped.	Gain	F/B ratio	Max power connect.	Beam width	Max. VSWR	Antenna lenght	Packing **	
Tip	Frekv. področje	Število elem.	Imped.	Dobitek	Razmerje napr.-naz.	Max moč priključ.	Širina glav. lista	Maks. VSWR	Dolžina antene	pcs kos	cm / m3
P-60 5G 7003800 SMA	698 - 3800 MHz	60	50 Ohm	8,5 - 10,5 dB(i)	23 dB	50 Watt	H 52° V 44° (@1800 MHz)	< 1,6 : 1	110 cm	10	119x40x27 / 0,131



Smith diagram
 Smithov diagram



Radiation pattern Smerni diagram

VSWR:

