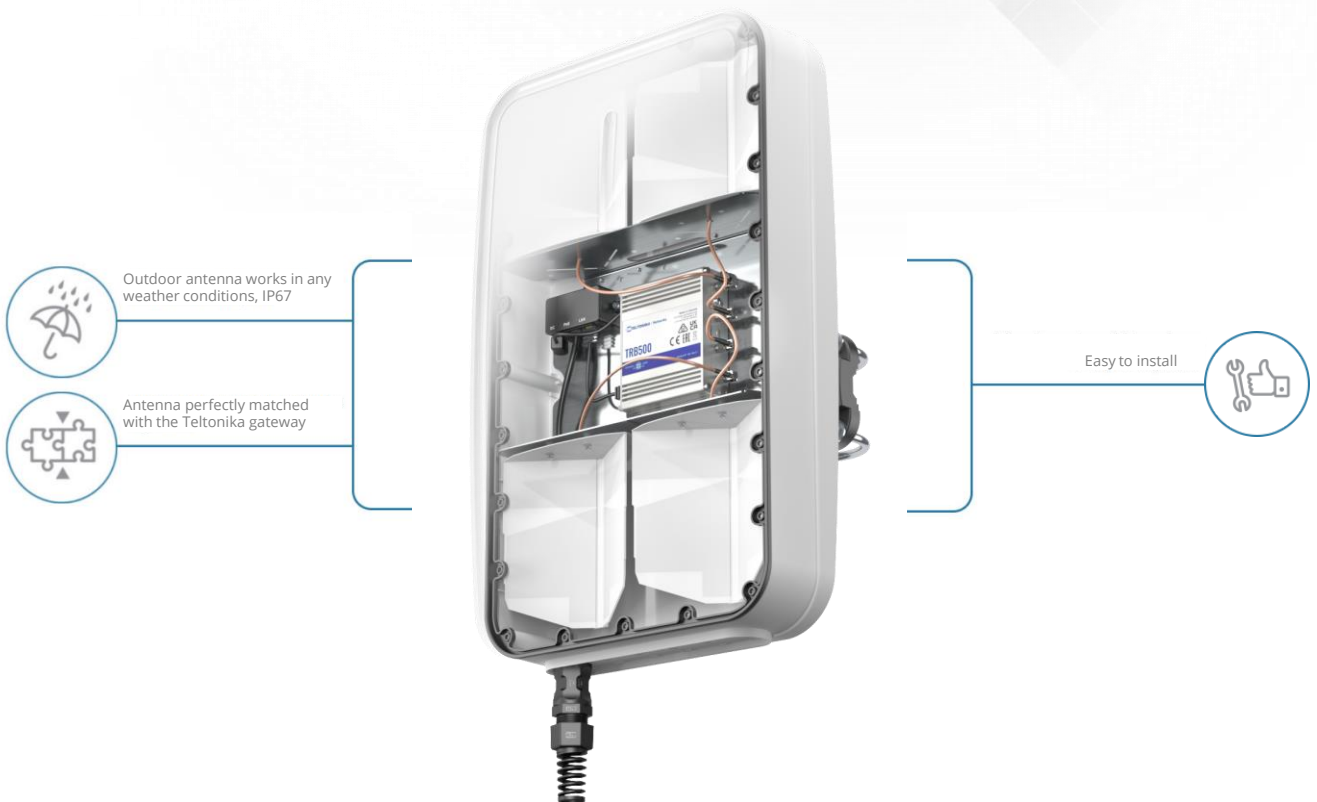


QuMax Omni for Teltonika TRB500

INTEGRATED MULTI-BAND LTE & 5G OMNI ANTENNA + PLACE TO INSTALL TELTONIKA TRB500 (ALL-IN-ONE)

QuMax Omni is a 5G omnidirectional MIMO 4x4 antenna for the Teltonika TRB500 gateway. The antenna covers a wide frequency range from 617MHz (Band71) to 3.8GHz. Additional router compartment inside the housing creates a variety of new outdoor (IP67) scenarios. It is recommended for moving applications, like trains, buses, yachts or campers, but also to improve signal quality in rural areas.

NOTE! The antenna doesn't support B32 band and n77 (above 3800MHz) band!



OUTDOOR

Use Teltonika Gateway wherever you want

ANTENNA

Maximize your signal with QuWireless antennas

SOLUTION

Plug Teltonika gateway and you are good to go

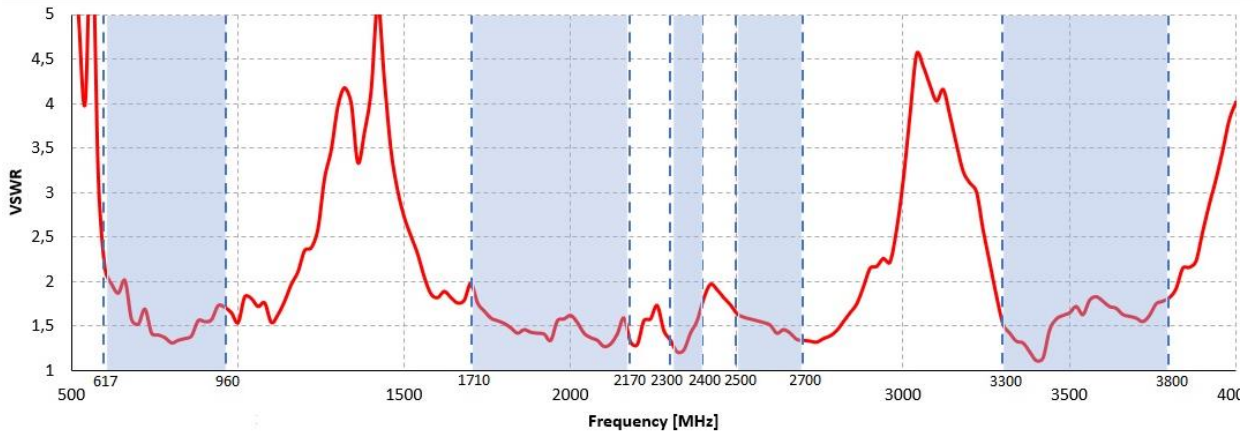
LTE & 5G SPECIFICATION

FREQUENCY	0.617 - 0.96 GHz 1.7 - 2.2 GHz 2.3 - 2.7 GHz 3.3 - 3.8 GHz
GAIN	0.617 - 0.96 GHz: 3 dBi 1.7 - 2.2 GHz: 3,5 dBi 2.3 - 2.7 GHz: 3,5 dBi 3.3 - 3.8 GHz: 4 dBi
Supported LTE/5G bands	1, 2, 3, 4, 5, 6, 7, 8, 9, 10, 12, 13, 14, 17, 18, 19, 20, 22, 23, 25, 26, 27, 28, 29, 30, 33, 34, 35, 36, 37, 38, 39, 40, 41, 42, 43, 44, 48, 49, 52, 53, 59, 62, 65, 66, 67, 68, 69, 71, 85, n78, n80, n81, n82, n83, n84, n86, n89, n90, n95
VSWR	<1.80, max <2.00
BEAMWIDTH	360°/35° ±5°
POLARIZATION	Vertical
IMPEDANCE	50 Ω

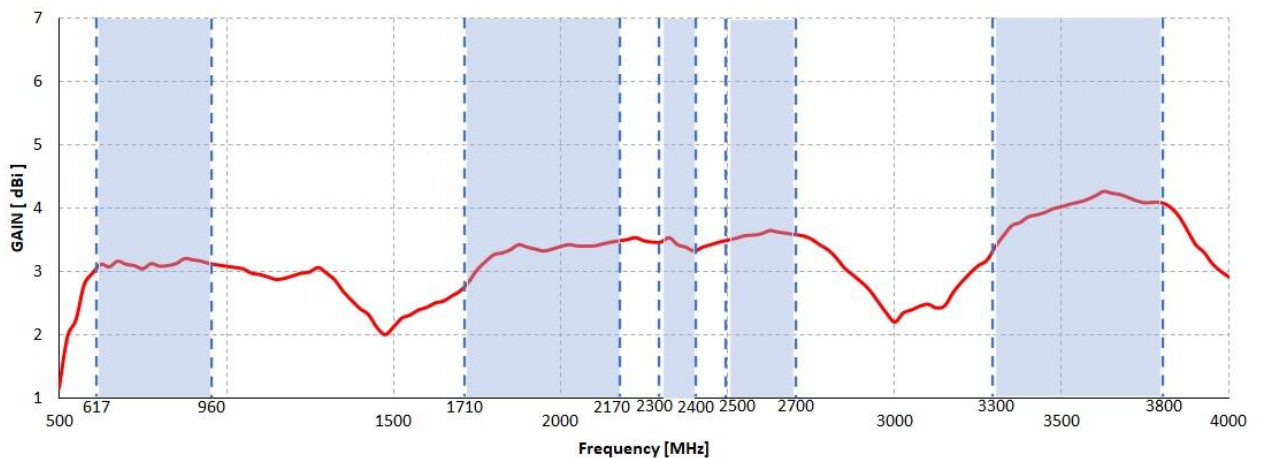
MECHANICAL SPECIFICATION

MATERIALS	ABS, aluminum, PTFE, Fiberglass
INGRESS PROTECTION	IP67
CONNECTOR TYPE	RJ45
DIMENSIONS	486.0 x 292.2 x 105.6 mm 19.13 x 11.50 x 4.16 inch
WEIGHT	2.5 kg 5.51 lbs
OPERATING TEMPERATURE	From -40°C to 70°C From -40°F to 167°F

VSWR for LTE & 5G antenna

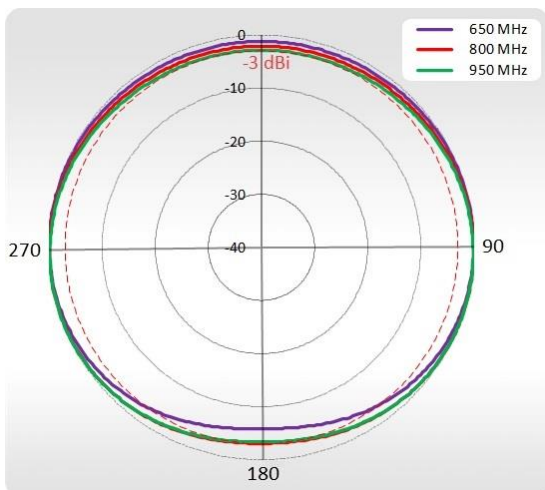


GAIN for LTE & 5G antenna

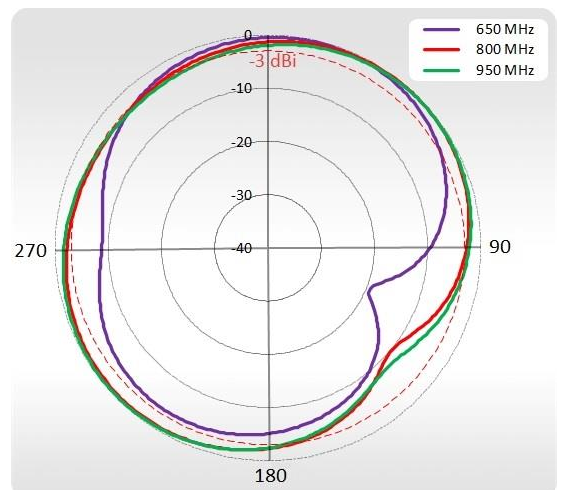


PLOTS

650-950 MHz Elevation

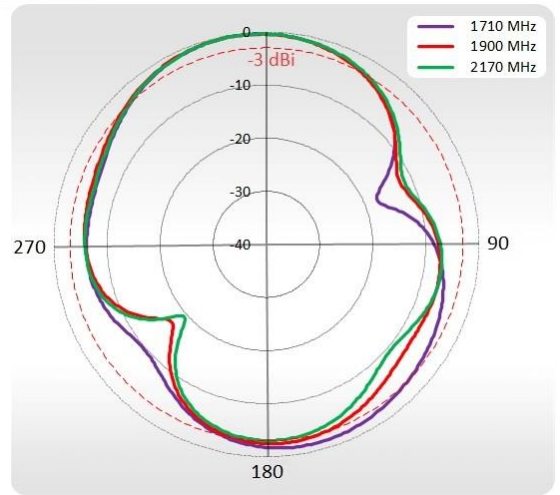
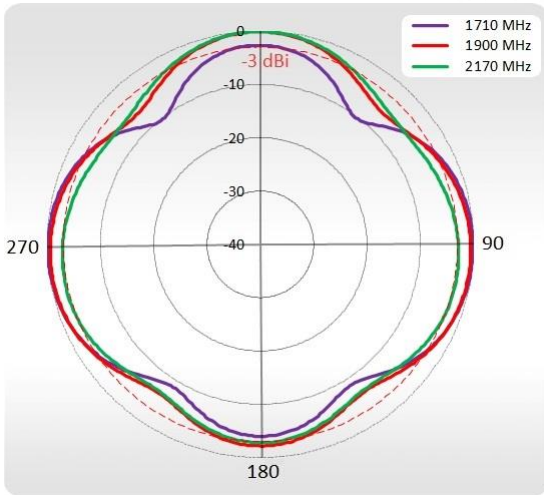


650-950 MHz Azimuth



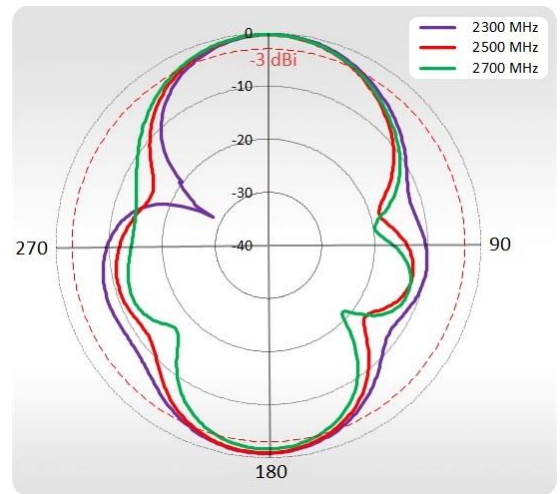
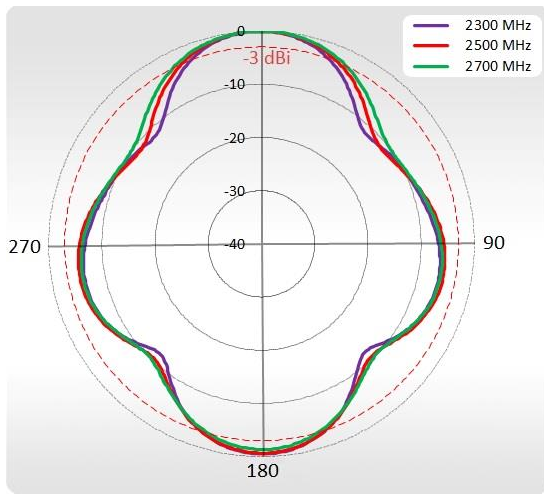
1710-2170 MHz Elevation

1710-2170 MHz Azimuth



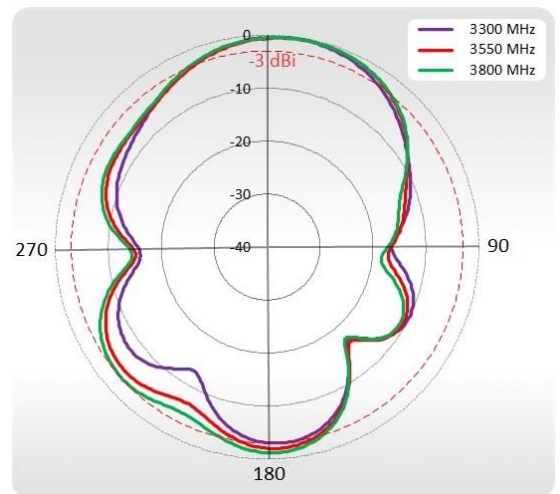
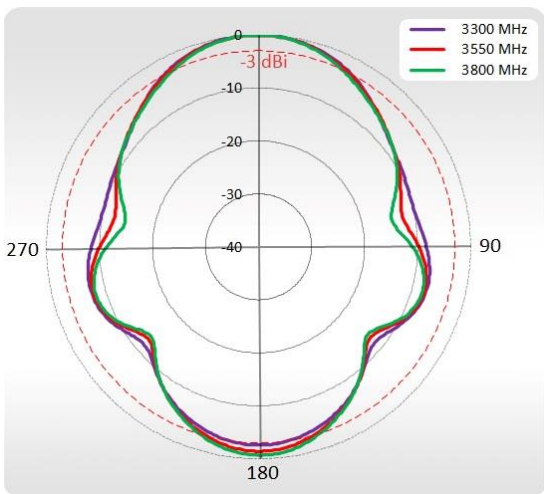
2300-2700 MHz Elevation

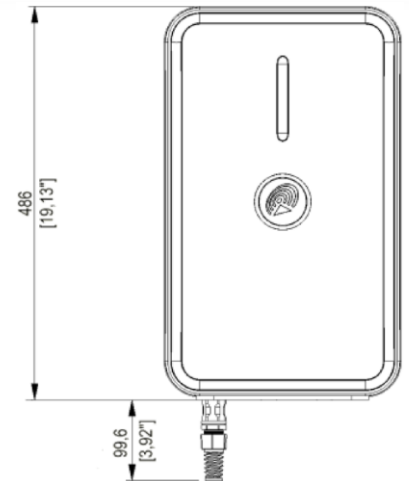
2300-2700 MHz Azimuth



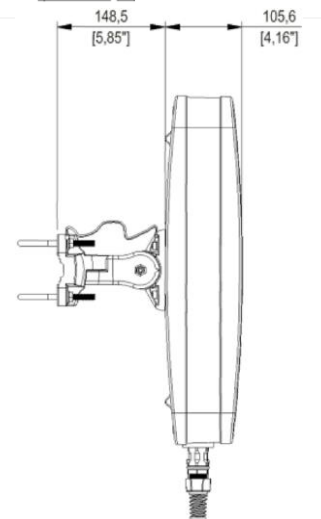
3300-3800 MHz Elevation

3300-3800 MHz Azimuth

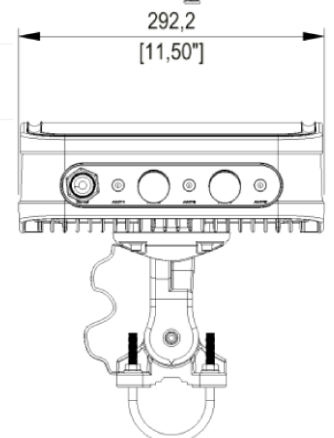


DEVICE SPECIFICATION
DIMENSIONS
Teltonika TRB245


- The TRB500 gateway is a compact-sized and energy-efficient industrial gateway with a Gigabit Ethernet interface and two configurable I/Os, allowing high-level customization and implementation of a multitude of scenarios.
- This device enables 5G network speeds with ultra-low latency for mission-critical infrastructures and high data throughput, ensured by 4 external antennas that allow the use of 4x4 MIMO.
- TRB500 comes with the RutOS operating system, which provides advanced security features and compatibility with our Remote Management System (RMS) for optimized remote management and monitoring capabilities of large fleets of devices.



[Teltonika TRB500 Datasheet](#)


HEADQUARTER:

Wireless Instruments sp. z o.o.
 ul. Kościuszki 27
 52-116 Iwiny
 POLAND

sales@quwireless.com
 tel 1. +48 601 366 369
 tel 2. +48 577 667 761
www.quwireless.com