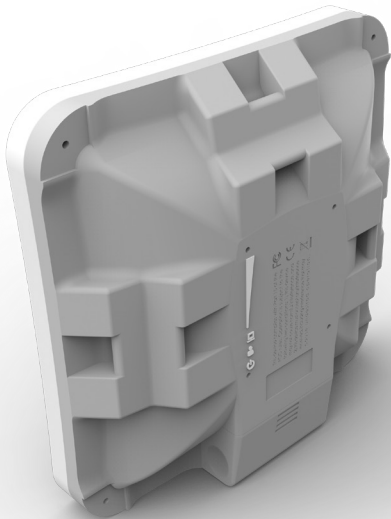


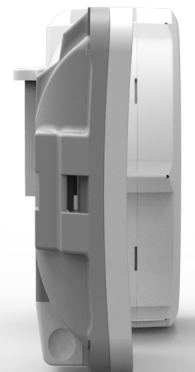
## SXTsq Lite2

The SXTsq Lite2 is a compact and lightweight outdoor wireless device with an integrated antenna. Perfect for point-to-point links or as a CPE unit. It is compact, weatherproof and easy to mount. The SXTsq Lite2 retains a 10 dBi antenna like the SXT Lite2, our previous model, yet the antenna design has been improved and the physical size has been dramatically reduced - the SXTsq is two times thinner.



The enclosure includes slots for directly attaching a hose clamp mount in three different mounting places, with ability to be mounted on horizontal railings. The device includes one 10/100 Mbit Ethernet port. There is also an easily accessible grounding connection to protect it against lightning.

### Comparison to previous SXTs



24 V 0.38 A power adapter



Metal ring



PoE injector

## Specifications

Product code	RBSXTsq2nD
CPU	QCA9533
CPU nominal frequency	650 MHz
CPU core count	1
Size of RAM	64 MB
Storage	16 MB Flash
10/100 Ethernet ports	1
Wireless bands	2.4 GHz radio
Wireless regulations	Specific frequency range may be limited by country regulations
Operating frequency	2412 - 2484 MHz
Protocols	802.11b/g/n
Chains	2
Antenna gain	10 dBi
Antenna beam width	60°
Wireless chip model	QCA9533
PoE in	Yes
Supported input voltage	10 V - 30 V, Passive PoE
Dimensions	129 x 129 x 34 mm; package: 255 x 180 x 45 mm
Weight	Unit: 295 g; package: 492 g
Operating temperature	-40 to 70° C
License level	3
Operating System	RouterOS
Max Power consumption	5 W

## Wireless specifications

RATE (5 GHz)	Tx (dBm)	Rx (dBm)
1MBit/s	30	-100
11MBit/s	30	-93
6MBit/s	30	-94
54MBit/s	26	-80
MCS0	30	-94
MCS7	25	-75

QuickMount Pro adjustable mount available separately.

