



300Mbps Wi-Fi Range Extender

N300 2×2 MIMO

TL-WA854RE



Easy Setup



Tether App

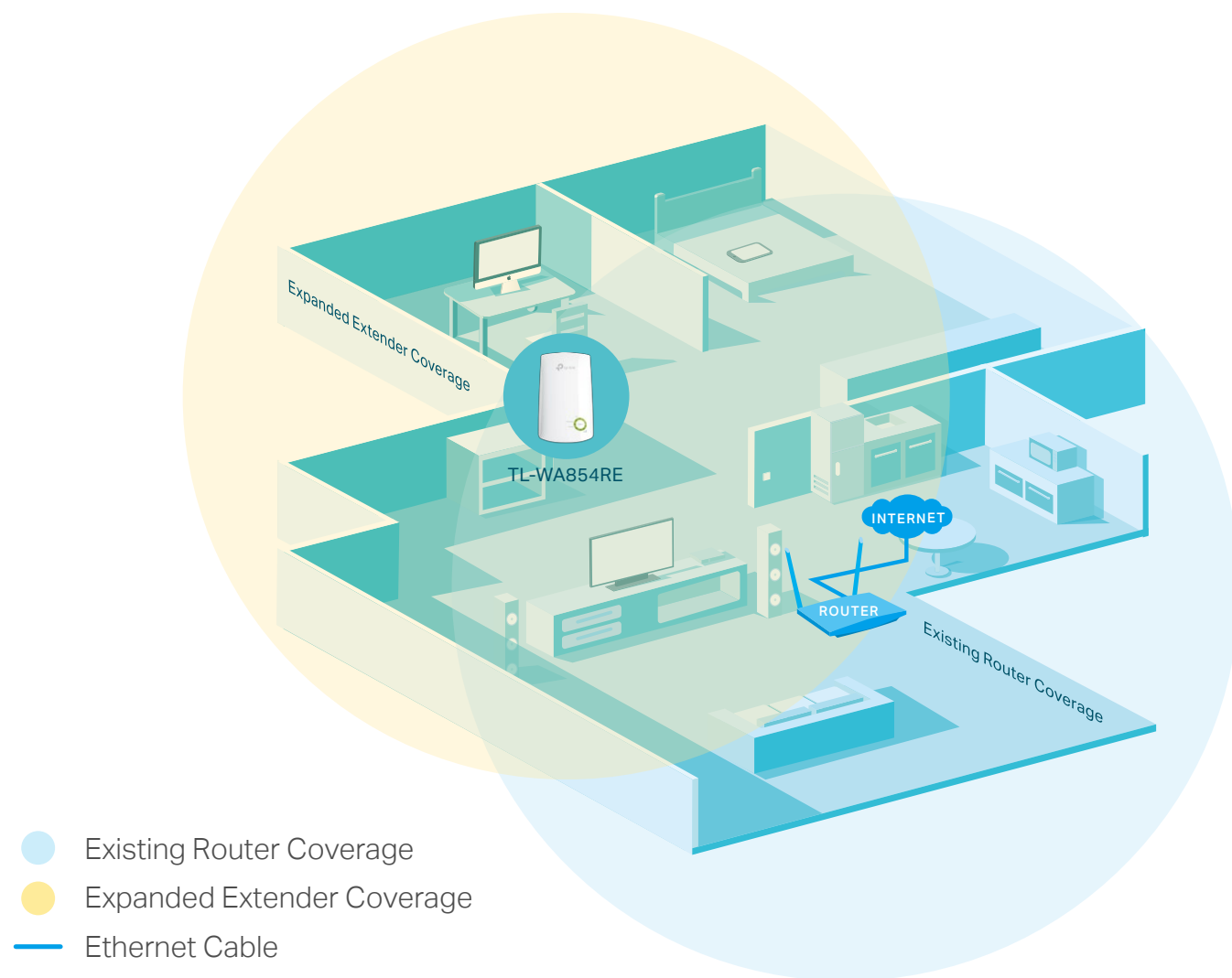


Wi-Fi Dead-Zone Killer

Highlights

Extend the Range of Your Wi-Fi Network

The 300 Mbps Wi-Fi Range Extender connects to your router wirelessly, strengthening and expanding its signal into areas it can't reach on its own, achieving speed of 300 Mbps.

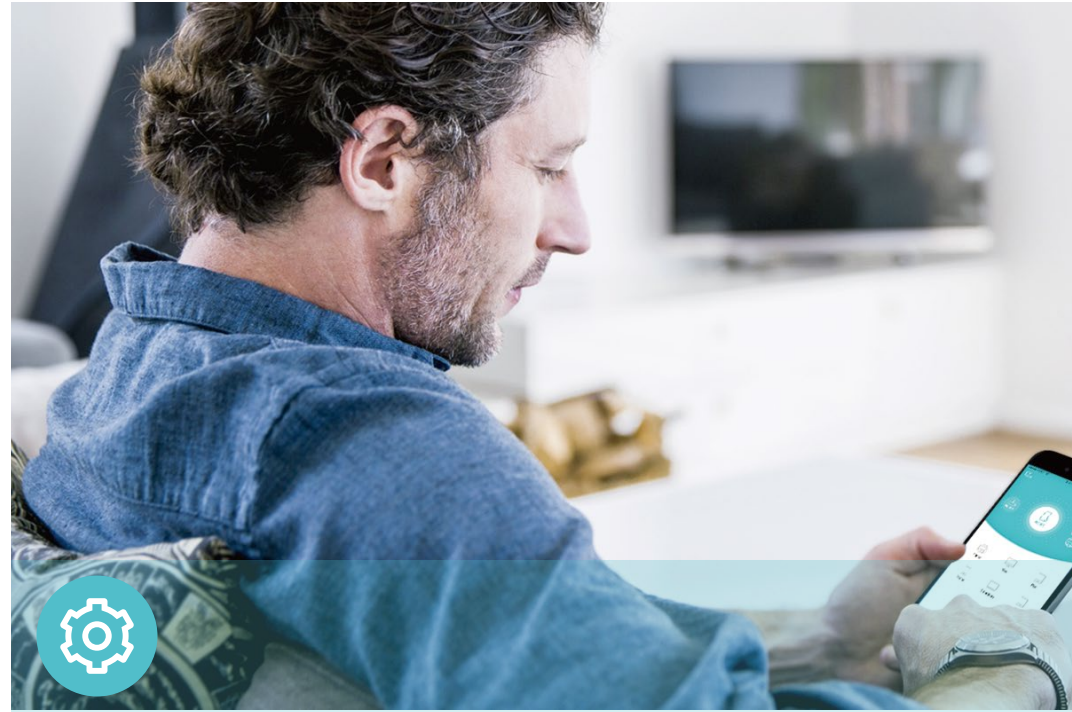


Perfect Location at a Glimpse

The intelligent signal lights help you quickly find the best location to install the range extender.



Features



Ease of Use

- Intuitive Web UI – Ensures quick and simple installation without hassle
- Fast Encryption – One-touch wireless security encryption with the WPS button
- Hassle-free Management with Tether App – Network management is made easy with the TP-Link Tether App, available on any Android or iOS device



Reliability

- Reliable Connection – Internal antennas for optimal Wi-Fi coverage and reliable wireless connections
- Universal Compatibility – Work with any Wi-Fi router
- Access Control – Flexibly allows or restricts certain devices to access the internet for a specific period.
- Power Scheduling – Automatically power on or off at the time you set to save power and prolong lifetime.



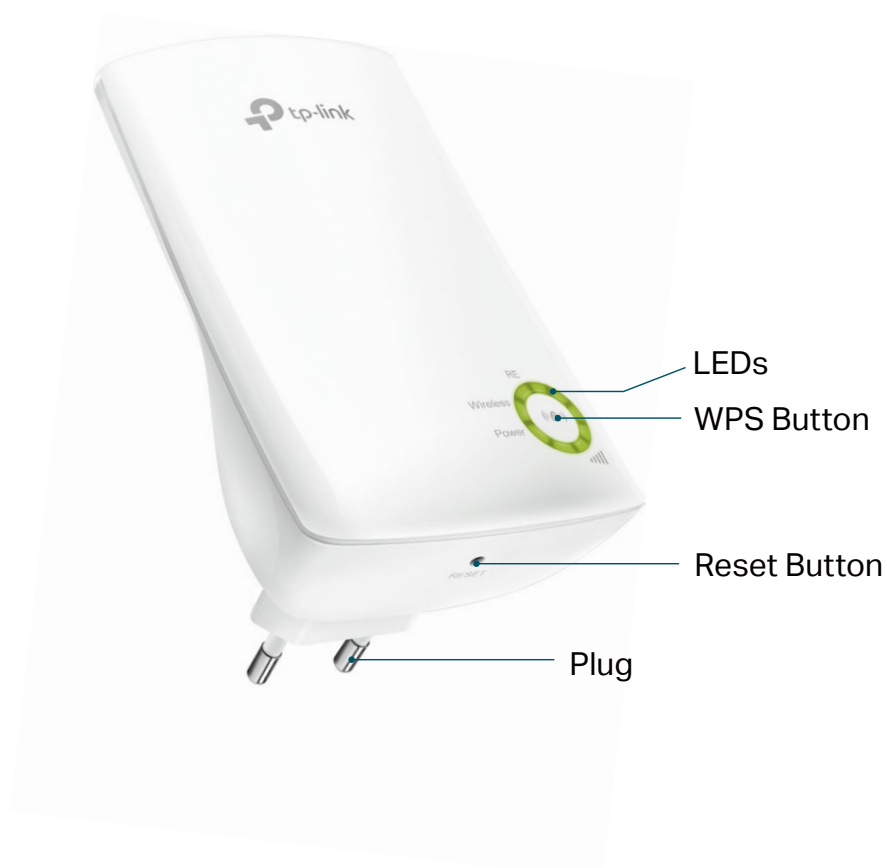
Speed

- Ultimate Wireless Speed – Wireless speed of up to 300 Mbps

Specifications

Hardware

- Button: WPS Button, Reset Button
- Antenna: 2 Internal Antennas
- Power Consumption: 3.3W
- Dimensions (W × D × H): 65.8 × 37.9 × 110 mm (2.6 × 1.5 × 4.3 in)



For more information, please visit

<http://www.tp-link.com/en/products/details/TL-WA854RE.html>

or scan the QR code left

Wireless

- Wireless Standards: IEEE 802.11b/g/n
- Frequency: 2.4 GHz
- Signal Rate: 300Mbps at 2.4 GHz
- Transmit Power: CE: <15 dBm
- Reception Sensitivity:
2.4 GHz:
11g 54 Mbps: -80 dBm, 11n HT20 MCS7: -79 dBm
11n HT40 MCS7: -76 dBm
- Wireless Function: Enable/Disable Wireless Radio, Power Schedule
- Wireless Security: 64/128-bit WEP, WPA/WPA2-PSK encryptions

Others

- Certification
CE, RoHS
- System Requirements
Microsoft Windows 98SE, NT, 2000, XP, Vista™ or Windows 7, 8, 8.1, 10, MAC OS, NetWare, UNIX or Linux
Internet Explorer 11, Firefox 12.0, Chrome 20.0, Safari 4.0, or other Java-enabled browser
- Package Contents
300Mbps Wi-Fi Range Extender TL-WA854RE
Quick Installation Guide

Specifications are subject to change without notice. TP-Link is a registered trademark of TP-Link Technologies Co., Ltd. Other brands and product names are trademarks or registered trademarks of their respective holders. Copyright ©2018 TP-Link Technologies Co., Ltd. All rights reserved.

*Maximum wireless signal rates are the physical rates derived from IEEE Standard 802.11 specifications. Actual wireless data throughput and wireless coverage are not guaranteed and will vary as a result of network conditions, client limitations, and environmental factors, including building materials, obstacles, volume and density of traffic, and client location.

*The maximum extended Wi-Fi coverage specification is based on performance testing results. Actual Wi-Fi coverage may vary due to environmental factors, including building materials and wireless interferences.

*The product may not be compatible with routers or gateways with firmware that has been altered, is based on open source programs, or is non-standard or outdated.

www.tp-link.com

TP-Link 300Mbps Wi-Fi Range Extender TL-WA854RE