



UniFi[®] XG 6 PoE

10G 6-Port Switch
with 802.3bt PoE++

Model: US-XG-6POE

QUICK START GUIDE

Introduction

Thank you for purchasing the Ubiquiti Networks® UniFi® 6-Port 10G Switch with 802.3bt PoE++. This Quick Start Guide is designed to guide you through the installation and also includes the warranty terms.

Package Contents



UniFi Switch



Mount Brackets
(Qty. 2)



Bracket Screws
(Qty. 8)



Mounting Screws
(Qty. 4)



Screw Anchors
(Qty. 4)



Power Adapter



Power Cord



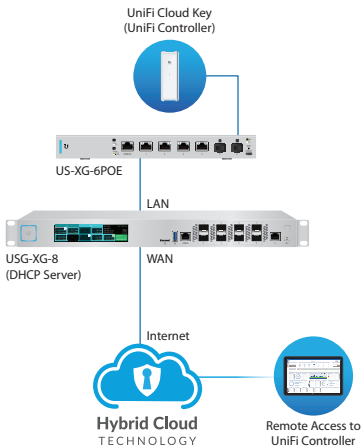
Cable Clip

System Requirements

- Linux, Mac OS X, or Microsoft Windows 7/8/10
- Java Runtime Environment 1.8 or above recommended
- Web Browser: Google Chrome (Other browsers may have limited functionality)
- UniFi Controller software v5.8.x (or newer), available at: www.ubnt.com/download/unifi

Network Topology Requirements

- A DHCP-enabled network for the UniFi Switch to obtain an IP address (connected devices will also obtain IP addresses after deployment)
- A UniFi Cloud Key or management station running the UniFi Controller software v5.8.x (or newer), located either on-site and connected to the same Layer 2 network, or off-site in a cloud or NOC

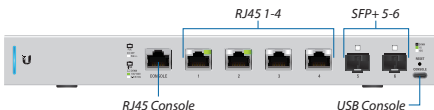


Sample Network Diagram

All UniFi devices support off-site management controllers. For setup details, refer to the User Guide on the website: www.ubnt.com/download/unifi

Hardware Overview

Front Panel



Ports

Port	Description
RJ45 Console	RJ45 serial console port for Command Line Interface (CLI) management. Use an RJ45-to-DB9, serial console cable, also known as a rollover cable, to connect the <i>Console</i> port to your computer. Then configure the following settings as needed: <ul style="list-style-type: none">• <i>Baud rate</i> 115200• <i>Data bits</i> 8• <i>Parity</i> NONE• <i>Stop bits</i> 1• <i>Flow control</i> NONE
RJ45 1-4	RJ45 ports support 100 Mbps or 1/2.5/5/10 Gbps Ethernet connections and 802.3af/at/bt PoE output.
SFP+ 5-6	Hot-swappable SFP+ ports support 1/10 Gbps connections.
USB Console	USB Type C console port for Command Line Interface (CLI) management.

Reset Button



Button	Description
Reset Button	<p>This button serves two functions for the UniFi Switch:</p> <ul style="list-style-type: none">• Restart Press and release the <i>Reset</i> button quickly.• Restore to Factory Default Settings Press and hold the <i>Reset</i> button for more than five seconds.

LEDs



System LED

State	Status
Flashing White	Initializing.
Steady White	Factory defaults, waiting for adoption.
Alternating White/Blue	Device is busy; do not touch or unplug it. This usually indicates that a process such as a firmware upgrade is taking place.
Steady Blue	Successfully adopted by a network and working properly.
Flashing Blue	This is used to locate a device. When you click Locate in the UniFi Controller software, the <i>System</i> LED will flash blue. The software will also display the location of the UniFi Switch on the map.

RJ45 LEDs



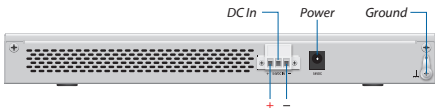
LED	State	Status
PoE	Off	PoE Disabled
	White	802.3af/at/bt PoE
Link/ Speed/ Activity	Off	No Link
	Green	Link Established at 100 or 1000 Mbps Flashing Indicates Activity
	White	Link Established at 2.5, 5, or 10 Gbps Flashing Indicates Activity

SFP+ LEDs




LED	State	Status
Link/ Speed/ Activity	Off	No Link
	Green	Link Established at 1 Gbps Flashing Indicates Activity
	White	Link Established at 10 Gbps Flashing Indicates Activity

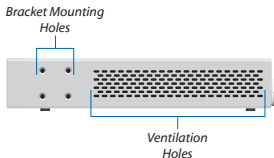
Back Panel



Port	Description
DC Input	Optional DC input for connecting a stand-alone or redundant DC power source (not included) with minimum power: 40W, 44 to 57VDC.
Power	Connect the included <i>Power Adapter</i> to the <i>Power</i> port.
Ground	Ancillary grounding point for enhanced ESD protection.

 **Note:** You can use the redundant DC power source as a hot spare; if there is no longer power through the *Power* port, the UniFi Switch will switch to the DC power source without interrupting its operation.

Side Panels



Hardware Installation

The UniFi Switch can be mounted on a horizontal surface, mounted on a vertical surface, or mounted in a rack (rackmount accessory sold separately).

- ! WARNING:** The US-XG-6POE must not be stacked. Do not place it on top of another switch. Do not place anything on top of the US-XG-6POE.
- ! WARNING:** FAILURE TO PROVIDE PROPER VENTILATION MAY CAUSE FIRE HAZARD. KEEP AT LEAST 20 MM OF CLEARANCE NEXT TO THE VENTILATION HOLES FOR ADEQUATE AIRFLOW.

Grounding (Recommended)

The UniFi Switch is grounded through the *Power Adapter*; however, you can add optional ESD grounding for enhanced ESD protection.

- Note:** You also have the option to use the *Cable Clip* to secure the cord of the *Power Adapter*. For instructions, proceed to the *Using the Cable Clip* section.
1. Loosen the ground screw and secure a ground wire (not included) to the grounding point.



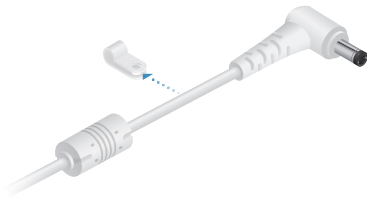
2. Secure the other end of the ground wire to a grounding block or other grounded structure.

Using the Cable Clip (Optional)

1. Remove the ground screw from the grounding point.



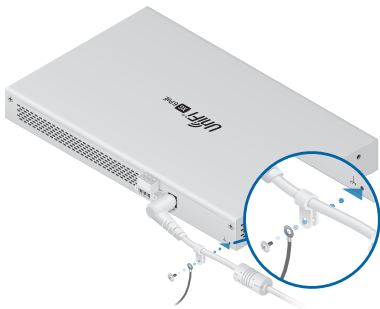
2. Insert the cord of the *Power Adapter* into the *Cable Clip*.



3. Connect the *Power Adapter* to the *Power* port.



4. Use the ground screw to attach the ground wire (not included) and *Cable Clip* to the grounding point.



5. Secure the other end of the ground wire to a grounding block or other grounded structure.

Connecting Power

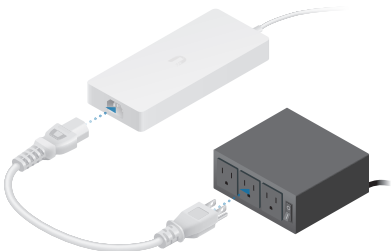
Use the included *Power Adapter* to power the UniFi Switch. You can also use the *DC Input* option as stand-alone power or a hot backup.

Using the Power Adapter

1. If you haven't already connected the *Power Adapter*, then connect it to the *Power* port.




2. Connect the *Power Cord* to the *Power Adapter*. Then connect the other end of the *Power Cord* to a power outlet.



Using the DC Input (Optional)

For stand-alone power or redundant backup, connect a DC power source to the UniFi Switch.

 **Note:** Only one power source can be used at any one time. With both power sources connected, the input with the highest voltage will be used; the other power source defaults to backup.

1. Connect the 3-pin terminal block connector of a DC/DC cable (not included) to the *DC Input*.
2. Wire a DC/DC cable (not included) to the *DC Input*. Ensure the polarity is correct: red is positive (+) and black is negative (-).



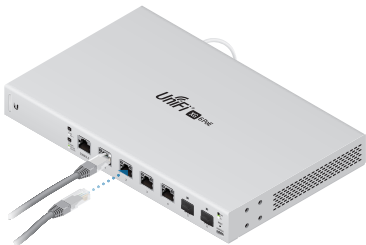
3. Connect the other end of the DC/DC power cable to a DC power source.
4. Connect your computer or host system and other devices to the other ports on the UniFi Switch.

Connecting Ethernet

1. Connect an Ethernet cable from your DHCP server or LAN to any port 1 to 4.



2. Connect your other network devices to the remaining RJ45 ports.



Connecting SFP+

To use an *SFP+* port:

1. Remove the protective plug covering the *SFP+* port.
2. Plug a compatible fiber module into the *SFP+* port.




3. Connect the fiber optic cable to the fiber module. Then connect the other end of the cable to another fiber device.



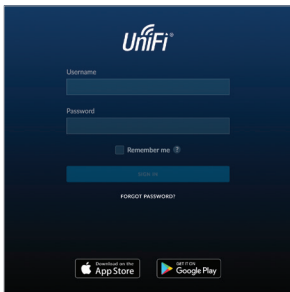
For information about compatible fiber SFP modules, visit:
community.ubnt.com/unifi

Software Installation

Download and install the latest version of the UniFi Controller software at www.ubnt.com/download/unifi and follow the on-screen instructions.

 **Note:** If you already have UniFi Controller v5.8.x or newer installed, skip to the section, *Adopting the UniFi Switch*.

After you have installed the software and run the UniFi Installation Wizard, a login screen will appear for the UniFi Controller management interface. Enter the admin name and password that you created and click **Sign In**.



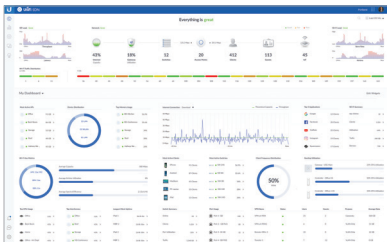
You can manage your network and view network statistics using the UniFi Controller management interface.

To adopt the UniFi Switch, proceed to the *Adopting the UniFi Switch* section.

For information on configuring and using the UniFi Controller software, refer to the User Guide on the website: www.ubnt.com/download/unifi

Adopting the UniFi Switch

1. From the UniFi Controller dashboard, click **Devices** in the left menu bar.



2. On the *Devices* screen, locate the UniFi Switch in the list of devices under the *Model* column. To adopt the UniFi Switch, click **Adopt**.

The screenshot shows the UniFi Controller 'Devices' page. The table below lists the devices, including their names, IP addresses, models, versions, and status. The 'Status' column shows 'CONNECTED' for most devices, and 'PENDING ADOPTION' for one device.

DEVICE NAME	IP ADDRESS	STATUS	MODEL	VERSION	OPTYPE	ACTIONS
91284640776	192.168.1.207	PENDING ADOPTION	UniFi Switch-12 SPOE	3.0.20.0076	20x 20x	LOCATE RESTART UPGRADE
91284640776	192.168.1.18	CONNECTED (2000 FEW)	UniFi Switch-12 SPOE	3.0.20.0076	20x 20x	LOCATE RESTART UPGRADE
91284640776	192.168.1.19	CONNECTED	UniFi AP-AC-Mini	5.0.30.0016	20x 1x	LOCATE RESTART UPGRADE
91284640776	192.168.1.17	CONNECTED	UniFi Switch-8	3.0.20.0027	16 16 40x 1x	LOCATE RESTART UPGRADE
91284640776	192.168.1.170	CONNECTED	UniFi AP-ProHD	5.0.30.0016	16 16 40x 1x	LOCATE RESTART UPGRADE
784620467547	192.168.1.102	CONNECTED	UniFi AP-ProHD	5.0.30.0016	16 16 40x 1x	LOCATE RESTART UPGRADE
91284640776	192.168.1.108	CONNECTED	UniFi Switch-24 POE (2000)	3.0.20.0029	16 16 20x 1x	LOCATE RESTART UPGRADE
91284640776	192.168.1.100	CONNECTED	UniFi AP-ProHD	5.0.30.0016	16 16 40x 1x	LOCATE RESTART UPGRADE
91284640776	192.168.1.119	CONNECTED	UniFi AP-ProHD	5.0.30.0016	16 16 40x 1x	LOCATE RESTART UPGRADE
91284640776	192.168.1.118	CONNECTED	UniFi Switch-24 47 (2000)	3.0.20.0019	16 16 40x 1x	LOCATE RESTART UPGRADE
91284640776	192.168.1.116	CONNECTED	UniFi Switch-24 POE (2000)	3.0.20.0019	16 16 40x 1x	LOCATE RESTART UPGRADE
91284640776	192.168.1.124	CONNECTED	UniFi AP-12	3.0.20.0019	16 16 40x 1x	LOCATE RESTART UPGRADE
91284640776	192.168.1.11	CONNECTED	UniFi Security Gateway SP	4.4.20.000405	16x 16x 16x 1x	LOCATE RESTART UPGRADE
91284640776	192.168.1.104	CONNECTED	UniFi AP-12	3.0.20.0019	16 16 40x 1x	LOCATE RESTART UPGRADE
91284640776	192.168.1.103	CONNECTED	UniFi Switch-8	3.0.20.0029	16 16 40x 1x	LOCATE RESTART UPGRADE
91284640776	192.168.1.101	CONNECTED	UniFi AP-AC-Mini	5.0.30.0016	16 16 40x 1x	LOCATE RESTART UPGRADE
91284640776	192.168.1.105	CONNECTED	UniFi AP-Pro	5.0.27.0019	16 16 20x	LOCATE RESTART UPGRADE
91284640776	192.168.1.109	CONNECTED	UniFi AP-Pro	5.0.27.0019	16 16 20x 1x	LOCATE RESTART UPGRADE
91284640776	192.168.1.11	CONNECTED	UniFi Switch-24 POE	3.0.20.0019	16 16 20x	LOCATE RESTART UPGRADE
91284640776	192.168.1.110	CONNECTED	UniFi AP	3.0.27.0019	16x	LOCATE RESTART UPGRADE
91284640776	192.168.1.117	CONNECTED	UniFi AP-ProHD	5.0.30.0016	16 16 47x 27x	LOCATE RESTART UPGRADE
91284640776	192.168.1.17	CONNECTED	UniFi AP-ProHD	5.0.30.0016	16 16 20x 27x	LOCATE RESTART UPGRADE
91284640776	192.168.1.106	CONNECTED	UniFi AP-ProHD	5.0.30.0016	16 16 27x 27x	LOCATE RESTART UPGRADE
91284640776	192.168.1.108	CONNECTED	UniFi AP-ProHD	5.0.30.0016	16 16 27x 27x	LOCATE RESTART UPGRADE

3. The *System LED* on the UniFi Switch will turn blue to confirm that it has been successfully adopted.


Specifications


US-XG-6POE	
Dimensions	165 x 268.1 x 31.8 mm (6.50 x 10.56 x 1.25")
Weight	1.3 kg (2.87 lb)
Interfaces	
Networking	(4) 100 Mbps or 1/2.5/5/10G RJ45 Ports (2) 1/10G SFP+ Ethernet Ports
Management	Ethernet In-Band (1) RJ45 Serial Port Out-of-Band (1) USB Type C Port Out-of-Band
Power Method	54VDC, 3.88A Power Adapter (Included) or DC Input with Terminal Block
Power Supply	External AC/DC Adapter (Included) or DC Power Source
Supported Voltage Range	44 to 57VDC
Max. Power Consumption (Excluding PoE Output)	40W
LEDs	
System	Status
RJ45 Data Ports	PoE; Speed/Link/Activity
SFP+ Data Ports	Link/Activity
ESD/EMP Protection	Air: ± 18 kV, Contact: ± 12 kV
Shock and Vibration	ETSI300-019-1.4 Standard
Operating Temperature	-5 to 45° C (23 to 113° F)
Operating Humidity	5 to 95% Noncondensing
Certifications	CE, FCC, IC


PoE	
PoE Interfaces	PoE++ IEEE 802.3bt (Pair A 1, 2+; 3, 6-) (Pair B 4, 5+; 7, 8-)
Max. 802.3bt Wattage per Port by PSE	60W
Voltage Range 802.3af Mode	44-57V
Voltage Range 802.3at/bt Mode	50-57V


Safety Notices

1. Read, follow, and keep these instructions.
2. Heed all warnings.
3. Only use attachments/accessories specified by the manufacturer.

 **WARNING:** Failure to provide proper ventilation may cause fire hazard. Keep at least 20 mm of clearance next to the ventilation holes for adequate airflow.

 **WARNING:** To reduce the risk of fire or electric shock, do not expose this product to rain or moisture.

 **WARNING:** Do not use this product in location that can be submerged by water.

 **WARNING:** Avoid using this product during an electrical storm. There may be a remote risk of electric shock from lightning.

Electrical Safety Information

1. Compliance is required with respect to voltage, frequency, and current requirements indicated on the manufacturer's label. Connection to a different power source than those specified may result in improper operation, damage to the equipment or pose a fire hazard if the limitations are not followed.
2. There are no operator serviceable parts inside this equipment. Service should be provided only by a qualified service technician.
3. This equipment is provided with a detachable power cord which has an integral safety ground wire intended for connection to a grounded safety outlet.
 - a. Do not substitute the power cord with one that is not the provided approved type. Never use an adapter plug to connect to a 2-wire outlet as this will defeat the continuity of the grounding wire.
 - b. The equipment requires the use of the ground wire as a part of the safety certification, modification or misuse can provide a shock hazard that can result in serious injury or death.
 - c. Contact a qualified electrician or the manufacturer if there are questions about the installation prior to connecting the equipment.
 - d. Protective earthing is provided by Listed AC adapter. Building installation shall provide appropriate short-circuit backup protection.
 - e. Protective bonding must be installed in accordance with local national wiring rules and regulations.

Limited Warranty

www.ubnt.com/support/warranty/

The limited warranty requires the use of arbitration to resolve disputes on an individual basis, and, where applicable, specify arbitration instead of jury trials or class actions.

Compliance

FCC

Changes or modifications not expressly approved by the party responsible for compliance could void the user's authority to operate the equipment.

This device complies with Part 15 of the FCC Rules. Operation is subject to the following two conditions:

1. This device may not cause harmful interference, and
2. This device must accept any interference received, including interference that may cause undesired operation.

NOTE: This equipment has been tested and found to comply with the limits for a Class A digital device, pursuant to part 15 of the FCC Rules. These limits are designed to provide reasonable protection against harmful interference when the equipment is operated in a commercial environment. This equipment generates, uses, and can radiate radio frequency energy and, if not installed and used in accordance with the instruction manual, may cause harmful interference to radio communications. Operations of this equipment in a residential area is likely to cause harmful interference in which case the user will be required to correct the interference at his own expense.

ISED Canada

CAN ICES-3(A)/NMB-3(A)

This Class A digital apparatus complies with Canadian CAN ICES-003.

CAN ICES-3(A)/NMB-3(A)

Cet appareil numérique de la classe A est conforme à la norme NMB-003 du Canada.

Australia and New Zealand



Warning: This equipment is compliant with Class A of CISPR 32. In a residential environment this equipment may cause radio interference.

CE Marking

CE marking on this product represents the product is in compliance with all directives that are applicable to it.



RoHS/WEEE Compliance Statement



English

European Directive 2012/19/EU requires that the equipment bearing this symbol on the product and/or its packaging must not be disposed of with unsorted municipal waste. The symbol indicates that this product should be disposed of separately from regular household waste streams. It is your responsibility to dispose of this and other electric and electronic equipment via designated collection facilities appointed by the government or local authorities. Correct disposal and recycling will help prevent potential negative consequences to the environment and human health. For more detailed information about the disposal of your old equipment, please contact your local authorities, waste disposal service, or the shop where you purchased the product.

Deutsch

Die Europäische Richtlinie 2012/19/EU verlangt, dass technische Ausrüstung, die direkt am Gerät und/oder an der Verpackung mit diesem Symbol versehen ist, nicht zusammen mit unsortiertem Gemeindeabfall entsorgt werden darf. Das Symbol weist darauf hin, dass das Produkt von regulärem Haushaltsmüll getrennt entsorgt werden sollte. Es liegt in Ihrer Verantwortung, dieses Gerät und andere elektrische und elektronische Geräte über die dafür zuständigen und von der Regierung oder örtlichen Behörden dazu bestimmten Sammelstellen zu entsorgen. Ordnungsgemäßes Entsorgen und Recyceln trägt dazu bei, potentielle negative Folgen für Umwelt und die menschliche Gesundheit zu vermeiden. Wenn Sie weitere Informationen zur Entsorgung Ihrer Altgeräte benötigen, wenden Sie sich bitte an die örtlichen Behörden oder städtischen Entsorgungsdienste oder an den Händler, bei dem Sie das Produkt erworben haben.

Español

La Directiva 2012/19/UE exige que los equipos que lleven este símbolo en el propio aparato y/o en su embalaje no deben eliminarse junto con otros residuos urbanos no seleccionados. El símbolo indica que el producto en cuestión debe separarse de los residuos domésticos convencionales con vistas a su eliminación. Es responsabilidad suya desechar este y cualesquiera otros aparatos eléctricos y electrónicos a través de los puntos de recogida que ponen a su disposición el gobierno y las autoridades locales. Al desechar y reciclar correctamente estos aparatos estará contribuyendo a evitar posibles consecuencias negativas para el medio ambiente y la salud de las personas. Si desea obtener información más detallada sobre la eliminación segura de su aparato usado, consulte a las autoridades locales, al servicio de recogida y eliminación de residuos de su zona o pregunte en la tienda donde adquirió el producto.

Français

La directive européenne 2012/19/UE exige que l'équipement sur lequel est apposé ce symbole sur le produit et/ou son emballage ne soit pas jeté avec les autres ordures ménagères. Ce symbole indique que le produit doit être éliminé dans un circuit distinct de celui pour les déchets des ménages. Il est de votre responsabilité de jeter ce matériel ainsi que tout autre matériel électrique ou électronique par les moyens de collecte indiqués par le gouvernement et les pouvoirs publics des collectivités territoriales. L'élimination et le recyclage en bonne et due forme ont pour but de lutter contre l'impact néfaste potentiel de ce type de produits sur l'environnement et la santé publique. Pour plus d'informations sur le mode d'élimination de votre ancien équipement, veuillez prendre contact avec les pouvoirs publics locaux, le service de traitement des déchets, ou l'endroit où vous avez acheté le produit.

Italiano

La direttiva europea 2012/19/UE richiede che le apparecchiature contrassegnate con questo simbolo sul prodotto e/o sull'imballaggio non siano smaltite insieme ai rifiuti urbani non differenziati. Il simbolo indica che questo prodotto non deve essere smaltito insieme ai normali rifiuti domestici. È responsabilità del proprietario smaltire sia questi prodotti sia le altre apparecchiature elettriche ed elettroniche mediante le specifiche strutture di raccolta indicate dal governo o dagli enti pubblici locali. Il corretto smaltimento ed il riciclaggio aiuteranno a prevenire conseguenze potenzialmente negative per l'ambiente e per la salute dell'essere umano. Per ricevere informazioni più dettagliate circa lo smaltimento delle vecchie apparecchiature in Vostro possesso, Vi invitiamo a contattare gli enti pubblici di competenza, il servizio di smaltimento rifiuti o il negozio nel quale avete acquistato il prodotto.

Declaration of Conformity

български [Bulgarian] С настоящото UBIQUITI NETWORKS декларира, че това устройство US-XG-6POE е в съответствие със съществените изисквания и други приложими разпоредби на Директиви 2014/30/ЕС, 2014/35/ЕС. Цялостният текст на ЕС декларацията за съответствие може да се намери на следния интернет адрес: www.ubnt.com/compliance

Hrvatski [Croatian] UBIQUITI NETWORKS ovim putem izjavljuje da je ovaj uređaj US-XG-6POE sukladan osnovnim zahtjevima i ostalim bitnim odredbama Direktiva 2014/30/EU, 2014/35/EU. Cjeloviti tekst EU izjave o sukladnosti dostupan je na sljedećoj internetskoj adresi: www.ubnt.com/compliance

Čeština [Czech] UBIQUITI NETWORKS tímto prohlašuje, že toto US-XG-6POE zařízení, je ve shodě se základními požadavky a dalšími příslušnými ustanoveními směrnic 2014/30/EU, 2014/35/EU. Úplné znění EU prohlášení o shodě je k dispozici na této internetové adrese: www.ubnt.com/compliance

Dansk [Danish] Hermed, UBIQUITI NETWORKS, erklærer at denne US-XG-6POE enhed, er i overensstemmelse med de væsentlige krav og øvrige relevante krav i direktiver 2014/30/EU, 2014/35/EU. EU-overensstemmelseserklæringens fulde tekst kan findes på følgende internetadresse: www.ubnt.com/compliance

Nederlands [Dutch] Hierbij verklaart UBIQUITI NETWORKS, dat deze US-XG-6POE apparaat, in overeenstemming is met de essentiële eisen en de andere relevante bepalingen van richtlijnen 2014/30/EU, 2014/35/EU. De volledige tekst van de EU-conformiteitsverklaring kan worden geraadpleegd op het volgende internetadres: www.ubnt.com/compliance

English Hereby, UBIQUITI NETWORKS, declares that this US-XG-6POE device, is in compliance with the essential requirements and other relevant provisions of Directives 2014/30/EU, 2014/35/EU. The full text of the EU declaration of conformity is available at the following internet address: www.ubnt.com/compliance

Eesti keel [Estonian] Käesolevaga UBIQUITI NETWORKS kinnitab, et antud US-XG-6POE seade, on vastavus olulistele nõuetele ja teistele asjakohastele sätetele direktiivide 2014/30/EL, 2014/35/EL. Eli vastavusdeklaratsiooni täielik tekst on kättesaadav järgmisel internetiaadressil: www.ubnt.com/compliance

Suomi [Finnish] Täten UBIQUITI NETWORKS vakuuttaa, että tämä US-XG-6POE laite, on yhdenmukainen olennaisten vaatimusten ja muiden sitä koskevien direktiivien 2014/30/EU, 2014/35/EU. EU-vaatimustenmukaisuusvakuutuksen täysimittainen teksti on saatavilla seuraavassa internetosoitteessa: www.ubnt.com/compliance

Français [French] Par la présente UBIQUITI NETWORKS déclare que l'appareil US-XG-6POE, est conforme aux exigences essentielles et aux autres dispositions pertinentes des directives 2014/30/UE, 2014/35/UE. Le texte complet de la déclaration UE de conformité est disponible à l'adresse internet suivante: www.ubnt.com/compliance

Deutsch [German] Hiermit erklärt UBIQUITI NETWORKS, dass sich dieses US-XG-6POE Gerät, in Übereinstimmung mit den grundlegenden Anforderungen und den anderen relevanten Vorschriften der Richtlinien 2014/30/EU, 2014/35/EU befindet. Der vollständige Text der EU-Konformitätserklärung ist unter der folgenden Internetadresse verfügbar: www.ubnt.com/compliance

Ελληνικά [Greek] Δια του παρόντος, UBIQUITI NETWORKS, δηλώνει ότι αυτή η συσκευή US-XG-6POE, είναι σε συμμόρφωση με τις βασικές απαιτήσεις και τις λοιπές σχετικές διατάξεις των οδηγιών 2014/30/ΕΕ, 2014/35/ΕΕ. Το πλήρες κείμενο της δήλωσης συμμόρφωσης ΕΕ διατίθεται στην ακόλουθη ιστοσελίδα στο διαδίκτυο: www.ubnt.com/compliance

Magyar [Hungarian] Ezennel UBIQUITI NETWORKS kijelenti, hogy ez a US-XG-6POE készülék megfelel az alapvető követelményeknek és más vonatkozó 2014/30/EU, 2014/35/EU irányelvek rendelkezéseit. Az EU-megfelelőségi nyilatkozat teljes szövege elérhető a következő internetes címen: www.ubnt.com/compliance

Íslenska [Icelandic] Hér, UBIQUITI NETWORKS, því yfir að þetta US-XG-6POE tæki er í samræmi við grunnkröfur og önnur viðeigandi ákvæði tilskipana 2014/30/ESB, 2014/35/ESB. Fullur texti ESB samræmisýfirlýsing er að finna á eftirfarandi netfangi: www.ubnt.com/compliance

Italiano [Italian] Con la presente, UBIQUITI NETWORKS, dichiara che questo dispositivo US-XG-6POE, è conforme ai requisiti essenziali ed alle altre disposizioni pertinenti delle direttive 2014/30/UE, 2014/35/UE. Il testo completo della dichiarazione di conformità UE è disponibile al seguente indirizzo Internet: www.ubnt.com/compliance

Latviešu valoda [Latvian] Ar šo, UBIQUITI NETWORKS, deklarē, ka US-XG-6POE ierīce, ir saskaņā ar būtiskajām prasībām un citiem attiecīgiem noteikumiem Direktīvās 2014/30/ES, 2014/35/ES. Pilns ES atbilstības deklarācijas teksts ir pieejams šādā interneta vietnē: www.ubnt.com/compliance

Lietuvių kalba [Lithuanian] UBIQUITI NETWORKS deklaruoja, kad šis US-XG-6POE įrenginys atitinka esminius reikalavimus ir kitas 2014/30/ES, 2014/35/ES Direktyvų nuostatas. Visas ES atitikties deklaracijos tekstas prieinamas šiuo interneto adresu: www.ubnt.com/compliance

Malti [Maltese] Hawnhekk, UBIQUITI NETWORKS, tidjikkja li dan il-mezz US-XG-6POE huwa konformi mar-rekwiżiti essenzjali u dispożizzjonijiet rilevanti oħrajn ta' Direttivi 2014/30/UE, 2014/35/UE. Id-dikjarazzjoni tal-konformità tista' tiġi kkonsultata minn www.ubnt.com/compliance

Norsk [Norwegian] Herved UBIQUITI NETWORKS, erklærer at denne US-XG-6POE enheten, er i samsvar med de grunnleggende kravene og andre relevante bestemmelser i direktivene 2014/30/EU, 2014/35/EU. Den fulle teksten til EU-samsvarserklæringen er tilgjengelig på følgende internettadresse: www.ubnt.com/compliance

Polski [Polish] Niniejszym, Ubiquiti Networks, oświadcza, że urządzenie US-XG-6POE, jest zgodny z zasadniczymi wymaganiami oraz pozostałymi stosownymi postanowieniami Dyrektywy 2014/30/UE, 2014/35/UE. Pełny tekst deklaracji zgodności UE jest dostępny pod następującym adresem internetowym: www.ubnt.com/compliance

Português [Portuguese] UBIQUITI NETWORKS declara que este dispositivo US-XG-6POE, está conforme com os requisitos essenciais e outras disposições das Directivas 2014/30/UE, 2014/35/UE. O texto integral da declaração de conformidade está disponível no seguinte endereço de Internet: www.ubnt.com/compliance

Română [Romanian] Prin prezenta, UBIQUITI NETWORKS declară că acest dispozitiv US-XG-6POE este în conformitate cu cerințele esențiale și alte prevederi relevante ale Directivelor 2014/30/UE, 2014/35/UE. Textul integral al declarației UE de conformitate este disponibil la următoarea adresă internet: www.ubnt.com/compliance

Slovenčina [Slovak] Týmto UBIQUITI NETWORKS, prehlasuje, že toto US-XG-6POE zariadenie, je v súlade so základnými požiadavkami a ďalšími relevantnými ustanoveniami smernice 2014/30/EÚ, 2014/35/EÚ. Úplné EÚ vyhlásenie o zhode je k dispozícii na tejto internetovej adrese: www.ubnt.com/compliance

Slovenščina [Slovenian] Družba UBIQUITI NETWORKS izjavlja, da je naprava US-XG-6POE v skladu z obveznimi zahtevami in drugimi ustreznimi določbami direktiv 2014/30/EU in 2014/35/EU. Celotno besedilo izjave EU o skladnosti je na voljo na naslednjem spletnem naslovu: www.ubnt.com/compliance

Español [Spanish] Por medio de la presente UBIQUITI NETWORKS declara que este dispositivo US-XG-6POE, cumple con los requisitos esenciales y cualesquiera otras disposiciones aplicables o exigibles de las Directivas 2014/30/UE, 2014/35/UE. El texto completo de la declaración UE de conformidad está disponible en la dirección Internet siguiente: www.ubnt.com/compliance

Svenska [Swedish] Härmed UBIQUITI NETWORKS, intygar att denna US-XG-6POE enhet är i överensstämmelse med de väsentliga egenskapskrav och övriga relevanta bestämmelser som framgår av direktiven 2014/30/EU, 2014/35/EU. Den fullständiga texten till EU-försäkran om överensstämmelse finns på följande webbadress: www.ubnt.com/compliance



Online Resources

Support help.ubnt.com

Community community.ubnt.com

Downloads downloads.ubnt.com

Ubiquiti Networks, Inc.
685 Third Avenue, 27th Floor
New York, NY 10017
USA



www.ubnt.com

©2018-2019 Ubiquiti Networks, Inc. All rights reserved. Ubiquiti, Ubiquiti Networks, the Ubiquiti U logo, the Ubiquiti beam logo, TOUGHCable, and UniFi are trademarks or registered trademarks of Ubiquiti Networks, Inc. in the United States and in other countries. Apple and the Apple logo are trademarks of Apple Inc., registered in the U.S. and other countries. App Store is a service mark of Apple Inc., registered in the U.S. and other countries. Android, Google, Google Play, the Google Play logo and other marks are trademarks of Google LLC. All other trademarks are the property of their respective owners.

JL012119