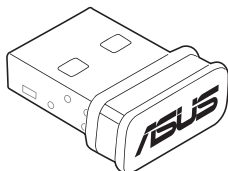




# USB-BT500 Bluetooth 5.0 USB Adapter

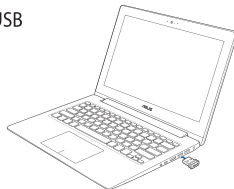


## Quick Start Guide

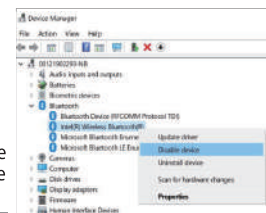
Q15921 / First Edition V1 / November 2019

### 1. Hardware Installation

Insert USB-BT500 into the USB Type A port of your device.

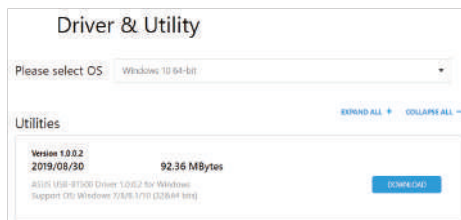


**NOTE:** In order to successfully install USB-BT500 on a laptop or desktop which has a built-in Bluetooth module, ensure to go to Windows Device Manager and disable the built-in Bluetooth before installing USB-BT500.



### 2. Driver Installation

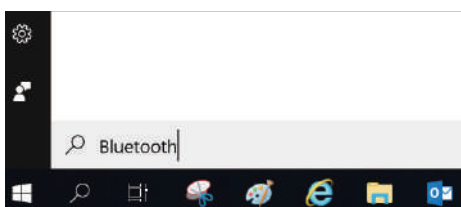
Download and install the latest driver from ASUS official website at [https://www.asus.com/Networking/USB-BT500/HelpDesk\\_Download/](https://www.asus.com/Networking/USB-BT500/HelpDesk_Download/)



**NOTE:** If you are using Windows® 10 and connected to the internet, the system will detect the driver automatically. Follow the instructions to download and install the latest driver.

### 3. Ensure that you have turned on Bluetooth in Windows®

Search for "Bluetooth" in Windows® Search box to open the Bluetooth settings panel. Ensure that you have turned on Bluetooth and applied adequate settings.



## Setting up a Home Network

繁體中文

### 1. 硬體安裝

將 USB-BT500 插入裝置的 USB Type A 連接埠。

**注意：**若筆記型電腦或桌上型電腦上已內建藍牙模組，安裝 USB-BT500 前，請先至 Windows 裝置管理員停用內建藍牙，以確保成功安裝。

### 2. 驅動程式安裝

請至華碩官方網站 [https://www.asus.com/Networking/USB-BT500/HelpDesk\\_Download/](https://www.asus.com/Networking/USB-BT500/HelpDesk_Download/) 下載並安裝最新驅動程式。

**注意：**若您使用的是 Windows® 10 作業系統並已連線網路，系統將會自動偵測驅動程式。請依照螢幕指示下載並安裝最新的驅動程式。

### 3. 請確認您已在 Windows® 作業系統中開啟藍牙

在 Windows® 作業系統的搜尋框中輸入「藍牙」以開啟藍牙設定面板。請確認您已開啟藍牙並套用適當的設定。

## Français Canadien

### 1. Installation du matériel

Insérez le dongle USB-BT500 dans le port USB Type-A de votre appareil.

**REMARQUE :** Afin d'installer correctement le module USB-BT500 sur un ordinateur portable ou un ordinateur de bureau disposant d'un module Bluetooth intégré, rendez-vous tout d'abord dans le Gestionnaire de périphériques de Windows et désactivez le Bluetooth intégré.

### 2. Installer le pilote

Téléchargez et installez le pilote depuis le site officiel ASUS : [https://www.asus.com/Networking/USB-BT500/HelpDesk\\_Download/](https://www.asus.com/Networking/USB-BT500/HelpDesk_Download/)

**REMARQUE :** Si vous utilisez Windows® 10 et êtes connecté à internet, le système détectera automatiquement le pilote. Suivez les instructions pour télécharger et installer le pilote le plus récent.

### 3. Assurez-vous d'avoir activé la fonction Bluetooth dans Windows®

Recherchez le terme "Bluetooth" dans le champ de recherche de Windows® pour ouvrir le panneau de configuration Bluetooth. Assurez-vous d'avoir activé le Bluetooth et d'avoir appliqué les paramètres adéquats.

## Español

### 1. Instalación del hardware

Inserte su USB-BT500 en el puerto USB Tipo A del dispositivo.

**NOTA:** Para instalar correctamente su USB-BT500 en un equipo portátil o de sobremesa que tenga un módulo Bluetooth incorporado, asegúrese de ir al Administrador de dispositivos de Windows y deshabilitar la funcionalidad Bluetooth incorporada antes de instalar su USB-BT500.

### 2. Instalación del controlador

Descargue e instale el controlador más reciente desde el sitio web oficial de ASUS: [https://www.asus.com/Networking/USB-BT500/HelpDesk\\_Download/](https://www.asus.com/Networking/USB-BT500/HelpDesk_Download/)

**NOTA:** Si está utilizando Windows® 10 y está conectado a Internet, el sistema detectará el controlador automáticamente. Siga las instrucciones para descargar e instalar el controlador más reciente.

### 3. Asegúrese de que ha activado la funcionalidad Bluetooth en Windows®

Buscar "Bluetooth" en Windows® Cuadro de búsqueda para abrir el panel de configuración de Bluetooth. Asegúrese de que ha activado la funcionalidad Bluetooth y ha aplicado la configuración adecuada.

### Notices

#### ASUS Recycling/Takeback Services

ASUS recycling and takeback programs come from our commitment to the highest standards for protecting our environment. We believe in providing solutions for you to be able to responsibly recycle our products, batteries, other components, as well as the packaging materials. Please go to <http://csr.asus.com/english/Takeback.htm> for the detailed recycling information in different regions.

#### REACH

Complying with the REACH (Registration, Evaluation, Authorisation, and Restriction of Chemicals) regulatory framework, we published the chemical substances in our products at ASUS REACH website at <http://csr.asus.com/english/REACH.htm>.

#### Federal Communications Commission Statement

This device complies with Part 15 of the FCC Rules. Operation is subject to the following two conditions:

- This device may not cause harmful interference.
- This device must accept any interference received, including interference that may cause undesired operation.

This equipment has been tested and found to comply with the limits for a class B digital device, pursuant to Part 15 of the FCC Rules. These limits are designed to provide reasonable protection against harmful interference in a residential installation.

This equipment generates, uses and can radiate radio frequency energy and, if not installed and used in accordance with the instructions, may cause harmful interference to radio communications. However, there is no guarantee that interference will not occur in a particular installation. If this equipment does cause harmful interference to radio or television reception, which can be determined by turning the equipment off and on, the user is encouraged to try to correct the interference by one or more of the following measures:

- Reorient or relocate the receiving antenna.
- Increase the separation between the equipment and receiver.
- Connect the equipment into an outlet on a circuit different from that to which the receiver is connected.
- Consult the dealer or an experienced radio/TV technician for help.



**CAUTION:** Any changes or modifications not expressly approved by the party responsible for compliance could void the user's authority to operate the equipment.

#### Prohibition of Co-location

This transmitter must not be co-located or operating in conjunction with any other antenna or transmitter.

#### FCC Radiation Exposure Statement

This equipment complies with FCC radiation exposure limits set forth for an uncontrolled environment. End users must follow the specific operating instructions for satisfying RF exposure compliance. To maintain compliance with FCC exposure compliance requirement, please follow operation instruction as documented in this manual.



**WARNING!** This equipment must be installed and operated in accordance with provided instructions and the antenna(s) used for this transmitter must be installed to provide a separation distance of at least 20 cm from all persons and must not be co-located or operating in conjunction with any other antenna or transmitter.

#### Compliance Statement of Innovation, Science and Economic Development Canada (ISED)

This device complies with Innovation, Science and Economic Development Canada licence exempt RSS standard(s). Operation is subject to the following two conditions: (1) this device may not cause interference, and (2) this device must accept any interference, including interference that may cause undesired operation of the device.

CAN ICES-3(B)/NMB-3(B)

#### Déclaration de conformité de Innovation, Sciences et Développement économique Canada (ISED)

Le présent appareil est conforme aux CNR d'innovation, Sciences et Développement économique Canada applicables aux appareils radio exempts de licence. L'exploitation est autorisée aux deux conditions suivantes: (1) l'appareil ne doit pas produire de brouillage, et (2) l'utilisateur de l'appareil doit accepter tout brouillage radioélectrique subi, même si le brouillage est susceptible d'en compromettre le fonctionnement.

CAN ICES-3(B)/NMB-3(B)

#### Radiation Exposure Statement:

The product complies with the Canada portable RF exposure limit set forth for an uncontrolled environment and are safe for intended operation as described in this manual. The further RF exposure reduction can be achieved if the product can be kept as far as possible from the user body or set the device to lower output power if such function is available.

#### Déclaration d'exposition aux radiations:

Le produit est conforme aux limites d'exposition pour les appareils portables RF pour les Etats-Unis et le Canada établies pour un environnement non contrôlé.

Le produit est sûr pour un fonctionnement tel que décrit dans ce manuel. La réduction aux expositions RF peut être augmentée si l'appareil peut être conservé aussi loin que possible du corps de l'utilisateur ou que le dispositif est réglé sur la puissance de sortie la plus faible si une telle fonction est disponible.

#### Radio Frequency (RF) Exposure Information

The radiated output power of the ASUS Wireless Device is below the Innovation, Science and Economic Development Canada radio frequency exposure limits. The ASUS Wireless Device should be used in such a manner such that the potential for human contact during normal operation is minimized.

This equipment should be installed and operated with a minimum distance of 20 cm between the radiator and any part of your body.

This device has been certified for use in Canada. Status of the listing in the Innovation, Science and Economic Development Canada's REL (Radio Equipment List) can be found at the following web address:

[http://www.ic.gc.ca/eic/site/ceb-bhst.nsf/eng/h\\_tt00020.html](http://www.ic.gc.ca/eic/site/ceb-bhst.nsf/eng/h_tt00020.html)

Additional Canadian information on RF exposure also can be found at the following web:

<https://www.ic.gc.ca/eic/site/smt-gst.nsf/eng/sf08792.html>

#### Informations concernant l'exposition aux fréquences radio (RF)

La puissance de sortie émise par cet appareil sans fil est inférieure à la limite d'exposition aux fréquences radio d'Industrie Canada (IC). Utilisez l'appareil sans fil de façon à minimiser les contacts humains lors d'un fonctionnement normal.

Cet appareil a été évalué et démontré conforme aux limites de DAS (Débit d'absorption spécifique) d'IC lorsqu'il est installé dans des produits hôtes particuliers qui fonctionnent dans des conditions d'exposition à des appareils portables (Les antennes doivent être situées à plus de 20 cm de votre corps).

L'utilisation de cet appareil est autorisée au Canada. Pour consulter l'entrée correspondant à l'appareil dans la liste d'équipement radio (REL - Radio Equipment List) d'Industrie Canada, rendez-vous sur: <http://www.ic.gc.ca/app/ssi/ntel/scrch/mvRdScrh.do?lang=eng>

Pour des informations supplémentaires concernant l'exposition aux fréquences radio au Canada, rendez-vous sur: <http://www.ic.gc.ca/eic/site/smt-gst.nsf/eng/sf08792.html>

#### 安全說明:

- 請在溫度為 0° C (32° F) 至 40° C (104° F) 之間的環境中使用本產品。
- 請依照產品上的電源功率貼紙說明使用正確的電源變壓器，如果使用錯誤規格的電源變壓器有可能會造成內部零件的損毀。
- 請勿將產品放置於不平坦或不穩定的表面。若產品的機殼毀壞，請聯絡維修服務人員。
- 請勿在產品上放置其他物品。請勿將任何物品塞入產品內，以避免引起元件短路或電路損毀。
- 請保持機器在乾燥的環境下使用，雨水、濕氣、液體等含有礦物質將會腐蝕電子線路。請勿在雷電天氣下使用數據機。
- 請勿堵塞產品的通風孔，以避免因散熱不良而導致系統過熱。
- 請勿使用破損的電源線、附件或其他周邊產品。
- 如果電源已毀壞，請不要嘗試自行修理。請將其交給專業技術服務人員或經銷商處理。
- 為了防止電擊風險，在搬動主機之前，請先將電源線插頭從電源插座上拔除。

#### NCC 警語

經型式認證合格之低功率射頻電機，非經許可，公司、商號或使用者均不得擅自變更頻率、加大功率或變更原設計之特性及功能。

低功率射頻電機之使用不得影響飛航安全及干擾合法通信；經發現有干擾現象時，應立即停用，並改善至無干擾時方得繼續使用。

前項合法通信，指依電信法規定作業之無線電通信。

低功率射頻電機須忍受合法通信或工業、科學及醫療用電波輻射性電機設備之干擾。

「產品之限用物質含有情況」之相關資訊，請參考下表：

單元	限制物質及其化學物質				
	鉛 (Pb)	汞 (Hg)	鎘 (Cd)	六價鉻 (Cr(VI))	多溴聯苯 (PBB)
印刷電路板及電子零件	○	○	○	○	○
結構零件 (金屬 / 塑膠)	○	○	○	○	○
其他零件 (如天線、指示燈、連接線)	○	○	○	○	○
其他及其配件 (如電源供應器)	-	○	○	○	○

備註: 1. "○" 係指該限制物質之百分比含量未超過百分比含量標準值。

備註: 2. "-" 係指該限制物質與產品無關。

## Networks Global Hotline Information

Area	Country/ Region	Hotline Numbers	Service Hours
Europe	Cyprus	800-92491	09:00-13:00; 14:00-18:00 Mon-Fri
	France	0033-170949400	09:00-18:00 Mon-Fri
	Germany	0049-1805010920 0049-1805010923 (component support) 0049-2102959911 (Fax)	09:00-18:00 Mon-Fri 10:00-17:00 Mon-Fri
	Hungary	0036-15054561	09:00-17:30 Mon-Fri
	Italy	06 97626662	09:00-13:00; 14:00-18:00 Mon-Fri
	Greece	00800-44142044	09:00-13:00; 14:00-18:00 Mon-Fri
	Austria	0043-820240513	09:00-18:00 Mon-Fri
	Netherlands/ Luxembourg	0031-591570290	09:00-17:00 Mon-Fri
	Belgium	0032-78150231	09:00-17:00 Mon-Fri
	Norway	0047-2316-2682	09:00-18:00 Mon-Fri
Europe	Sweden	0046-858769407	09:00-18:00 Mon-Fri
	Finland	00358-969379690	10:00-19:00 Mon-Fri
	Denmark	0045-38322943	09:00-18:00 Mon-Fri
	Poland	0048-225718040	08:30-17:30 Mon-Fri
	Spain	0034-902898688	09:00-18:00 Mon-Fri
	Portugal	00351-707500310	09:00-18:00 Mon-Fri
	Slovak Republic	00421-232162621	08:00-17:00 Mon-Fri
	Czech Republic	00420-596766888	08:00-17:00 Mon-Fri
	Switzerland-German	0041-848111010	09:00-18:00 Mon-Fri
	Switzerland-French	0041-848111014	09:00-18:00 Mon-Fri
	Switzerland-Italian	0041-848111012	09:00-18:00 Mon-Fri
	United Kingdom	0044-1442265548	09:00-17:00 Mon-Fri
	Ireland	00353-1890719918	09:00-17:00 Mon-Fri
	Russia and CIS	008-800-100-ASUS	09:00-18:00 Mon-Fri
Ukraine	0038-044547727	09:00-18:00 Mon-Fri	
Americas	USA	1-812-282-2787	8:30-12:00 EST Mon-Fri
	Canada		9:00-18:00 EST Sat-Sun
	Mexico	001-8008367847 4003 0988 (Capital) 0800 880 0988 (demais localidades)	08:00-20:00 CST Mon-Fri 08:00-15:00 CST Sat
Middle East + Africa	Brazil		9:00am-18:00 Mon-Fri
	Egypt	800-787348	09:00-18:00 Sun-Thu
	Saudi Arabia	800-1212787	09:00-18:00 Sat-Wed
	UAE	00971-42958941	09:00-18:00 Sun-Thu
	Turkey	0090-2165240000	09:00-18:00 Mon-Fri
	South Africa	*6557/00972-39142800	08:00-17:00 Sun-Thu
Balkan Countries	Israel	*9770/00972-35598555	08:30-17:30 Sun-Thu
	Romania	0040-213301786	09:00-18:30 Mon-Fri
	Bosnia Herzegovina	00387-33773163	09:00-17:00 Mon-Fri
	Bulgaria	00359-70014411	09:30-18:30 Mon-Fri
	Croatia	00385-29889170	09:30-18:00 Mon-Fri
	Montenegro	00382-20608251	09:00-17:00 Mon-Fri
	Serbia	00381-112070677	09:00-17:00 Mon-Fri
Balkan Countries	Slovenia	00368-59045400	08:00-16:00 Mon-Fri
	Estonia	00372-6671796	09:00-18:00 Mon-Fri
Baltic Countries	Latvia	00371-67408838	09:00-18:00 Mon-Fri
	Lithuania-Kaunas	00370-37329000	09:00-18:00 Mon-Fri
Lithuania-Vilnius	00370-522101160	09:00-18:00 Mon-Fri	



#### NOTES:

- UK support e-mail: [network\\_support\\_uk@asus.com](mailto:network_support_uk@asus.com)
- For more information, visit the ASUS support site at: <http://support.asus.com>

#### [English] CE statement

#### Simplified EU Declaration of Conformity

ASUSTek Computer Inc. hereby declares that this device is in compliance with the essential requirements and other relevant provisions of Directive 2014/53/EU. Full text of EU declaration of conformity is available at [https://www.asus.com/Networking/USB-BT500/HelpDesk\\_Declaration/](https://www.asus.com/Networking/USB-BT500/HelpDesk_Declaration/)

The frequency, mode and the maximum transmitted power in EU are listed below:

2402-2480MHz(BT EDU): 9.90dBm

2402-2480MHz(BT LE): 9.70dBm

#### Safety Notices

- Use this product in environments with ambient temperatures between 0°C(32°F) and 40°C(104°F).
- DO NOT expose to or use near liquids, rain, or moisture.

<b>Manufacturer</b>	<b>ASUSTek Computer Inc.</b> Tel: +886-2-2894-3447 Address: 4F, No. 150, LITE RD., PEITOU, TAIPEI 112, TAIWAN 華碩電腦股份有限公司 電話: +886-2-2894-3447 地址: 台灣台北市北投區立德路 15 號
<b>Authorised representative in Europe</b>	<b>ASUS Computer GmbH</b> Address: HARKORT STR. 21-23, 40880 RATINGEN, GERMANY
<b>Authorised distributors in Turkey</b>	<b>BOGAZICI BILGISAYAR TICARET VE SANAYI A.S.</b> Tel./FAX No.: +90 212 331 10 00 / +90 212 332 28 90 Address: ESENTEPE MAH. BUYUKDERE CAD. ERCAN HAN B BLOK NO:121 SISLI ISTANBUL 34394 <b>CIZGI Elektronik San. Tic. Ltd. Sti.</b> Tel./FAX No.: +90 212 356 70 70 / +90 212 356 70 69 Address: GURSEL MAH. AKMAN SK.47B 1 KAGITHANE/ISTANBUL <b>KOYUNCU ELEKTRONIK BILGI ISLEM SIST. SAN. VE DIS TIC. A.S.</b> Tel. No.: +90 216 5288888 Address: EMEK MAH.ORDU CAD. NO:18, SARIGAZI, SANCAKTEPE ISTANBUL
	<b>ENDEKS BİLİŞİM SAN VE DİŞ TIC LTD ŞTİ</b> Tel./FAX No.: +90 216 523 35 70 / +90 216 523 35 71 Address: NECIP FAZIL BULVARI, KEYAP CARSI SITESI, G1 BLOK, NO:115 YEDUELLU, UMRANIYE, ISTANBUL
	<b>PENTA TEKNOLOJİ URUNLERİ DAĞITIM TİCARET A.Ş.</b> Tel./FAX No.: +90 216 528 0000 Address: ORGANIZE SANAYİ BÖLGESİ NATO YOLU 4.CADDE NO:1 UMRANIYE, ISTANBUL 34775



5300-00007660-01W