

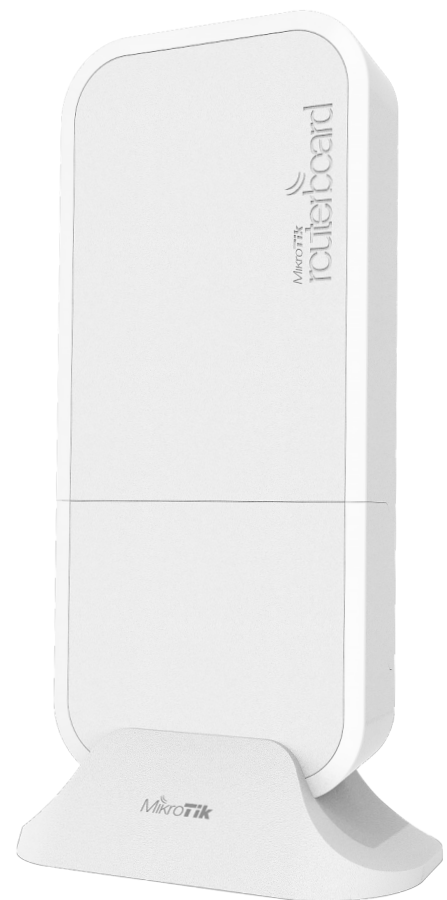
wAP ac LTE

The wAP ac LTE is a powerful dual-band wireless AP with LTE backup and two Gigabit Ethernet ports, available in several versions.

Based on the popular wAP form factor, the device is weatherproof and ready for outdoor and indoor installations. You can mount it on walls, ceilings, poles or stand it on a flat surface.

The device is powered by a four core 716 MHz CPU and 128 MB RAM, capable of handling heavy loads. It's equipped with two Gigabit Ethernet ports, dual-chain 2.4 GHz and dual-chain 5 GHz wireless for dual concurrent AP coverage. It has a DC power jack, and supports 10-57 V power input by Passive POE or 802.3af/at.

For the easier use unit is now equipped with a Micro SIM slot.



Three models are available:

- wAP ac LTE kit (RBwAPGR-5HacD2HnD&R11e-LTE) with R11e-LTE modem for International bands 1, 2, 3, 7, 8, 20, 38 and 40.
- wAP ac 4G kit (RBwAPGR-5HacD2HnD&R11e-4G) with R11e-4G modem for International / USA bands 3, 7, 20, 31, 41n, 42 and 43.
- wAP R ac (RBwAPGR-5HacD2HnD) without LTE card.

Specifications

| | | | |
|----------------------------|---|--|----------------------------|
| Product code | RBwAPGR-5HacD2HnD | RBwAPGR-5Hac-D2HnD&R11e-LTE | RBwAPGR-5Hac-D2HnD&R11e-4G |
| CPU | Quad-core IPQ-4018 716 MHz | | |
| Size of RAM | 128 MB | | |
| Storage | 16 MB flash | | |
| 10/100/1000 Ethernet ports | 2 | | |
| Wireless | 2.4 GHz 802.11b/g/n dual-chain, 5 GHz 802.11a/n/ac dual-chain | | |
| Wireless regulations | Specific frequency range will be limited by country regulations | | |
| Wireless antenna max gain | 2.5 dBi | | |
| LTE antenna max gain | 4 dBi (with u.FL connector) | | |
| Antenna beam width | 360° | | |
| LTE category | - | 4 (150 Mbps Downlink, 50 Mbps Uplink) | |
| 3G category | - | R7 (21 Mbps Downlinks, 5.76 Mbps Uplink) | - |
| 2G category | - | Class12 | - |
| Micro SIM slot | 1 | | |
| Supported input voltage | DC jack 10 - 57 V | | |
| PoE in | Passive PoE 18-57V or active 802.3af/at | | |
| Dimensions | 185 x 85 x 30 mm | | |
| Operating temperature | -30°C .. +60°C | | |
| Operating system | RouterOS, License level 4 | | |
| MiniPCIe slots | 1 | | |
| Max Power consumption | 11 W | 14 W | |

Supported bands

RBwAPGR-5HacD2HnD&R11e-LTE

| | |
|-----------------|--|
| LTE (FDD) bands | 1(2100)/2(1900)/3(1800)/7(2600)/8(900)/20(800) |
| LTE (TDD) bands | 38(2600)/40(2300) |
| 3G bands | 1(2100)/2(1900)/5(850)/8(900) |
| 2G bands | 2(1900)/3(1800)/5(850)/8(900) |

Supported bands

RBwAPGR-5HacD2HnD&R11e-4G

| | |
|-----------------|-------------------------------|
| LTE (FDD) bands | 3/7/20/31 (1800/2600/800/450) |
| LTE (TDD) bands | 41n/42/43 (2500/3500/3700) |

Wireless specifications

| Rate (2.4 GHz) | Tx (dBm) | Rx (dBm) | Rate (5 GHz) | Tx (dBm) | Rx (dBm) |
|----------------|----------|----------|--------------|----------|----------|
| 1MBit/s | 22 | -100 | 6MBit/s | 24 | -96 |
| 11MBit/s | 22 | -94 | 54MBit/s | 20 | -80 |
| 6MBit/s | 23 | -95 | MCS0 | 24 | -96 |
| 54MBit/s | 19 | -78 | MCS7 | 19 | -75 |
| MCS0 | 23 | -95 | MCS9 | 17 | -70 |
| MCS7 | 18 | -73 | | | |

Included parts



24 V 0.8 A power adapter



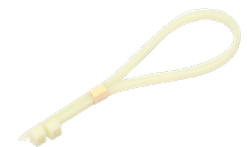
Screw kits



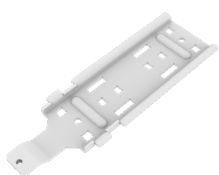
Desktop stand



Metal ring



Plastic straps



Mount base



Gigabit PoE injector



Ceiling mount base